



Datasheet for ABIN618087

Ovalbumin Protein (OVA) (full length)



[Go to Product page](#)

1 Image

Overview

Quantity:	1 g
Target:	Ovalbumin (OVA)
Protein Characteristics:	full length
Origin:	Chicken
Host:	Please inquire
Protein Type:	Native
Application:	Western Blotting (WB), ELISA

Product Details

Characteristics:	Full length native chicken egg ovalbumin
Purification:	Purified from chicken egg white
Purity:	> 95 %(SDS-PAGE)

Target Details

Target:	Ovalbumin (OVA)
Alternative Name:	ovalbumin (OVA Products)
Target Type:	Virus
Background:	Background: Storage protein of egg white. Lack protease inhibitory activity. Synonyms: Allergen Gal d II, Egg albumin, Plakalbumin.

Application Details

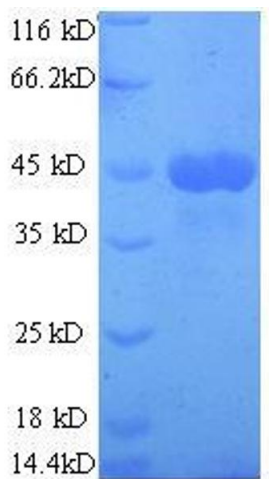
Restrictions: For Research Use only

Handling

Format: Lyophilized

Buffer: PBS

Images



SDS-PAGE

Image 1.