

Datasheet for ABIN6186381  
**anti-HLA-DRB1 antibody**

## 3 Images

[Go to Product page](#)

## Overview

Quantity:	50 µL
Target:	HLA-DRB1
Reactivity:	Human, Monkey
Host:	Mouse
Clonality:	Monoclonal
Conjugate:	This HLA-DRB1 antibody is un-conjugated
Application:	Western Blotting (WB), Flow Cytometry (FACS), Immunofluorescence (IF), Immunostaining (Ist), Immunohistochemistry (Formalin-fixed Sections) (IHC (f))

## Product Details

Purpose:	Mouse Monoclonal anti-HLA-DRB (HLA-DRB/1067), Purified, BSA-free
Immunogen:	Activated human peripheral blood mononuclear cells
Clone:	HLA-DRB-1067
Isotype:	IgG2b kappa
Characteristics:	<p>This MAb reacts with the beta-chain of HLA-DRB1 antigen, a member of MHC class II molecules. It does not cross react with HLA-DP and HLA-DQ. Its epitope is different from that of MAb L243. HLA-DR is a heterodimeric cell surface glycoprotein comprised of a 36 kDa alpha (heavy) chain and a 28 kDa beta (light) chain. It is expressed on B-cells, activated T-cells, monocytes/macrophages, dendritic cells and other non-professional APCs. In conjunction with the CD3/TCR complex and CD4 Molecules, HLA-DR is critical for efficient peptide presentation to CD4 T cells. It is an excellent histiocytic marker in paraffin sections producing intense</p>

## Product Details

cytoplasmic staining. True histiocytic neoplasms are similarly positive. HLA-DR antigens also occur on a variety of epithelial cells and their corresponding neoplastic counterparts. Loss of HLA-DR expression is related to tumor microenvironment and predicts adverse outcome in diffuse large B-cell lymphoma. Primary antibodies are available purified, or with a selection of fluorescent CF® dyes and other labels. CF® dyes offer exceptional brightness and photostability. Note: Conjugates of blue fluorescent dyes like CF®405S and CF®405M are not recommended for detecting low abundance targets, because blue dyes have lower fluorescence and can give higher non-specific background than other dye colors.

Purification: Purified

## Target Details

Target: HLA-DRB1

Alternative Name: HLA-DRB ([HLA-DRB1 Products](#))

Molecular Weight: 28 kDa (beta chain)

Gene ID: 3123, 534322

UniProt: [P01911](#)

Pathways: [TCR Signaling](#), [Positive Regulation of Peptide Hormone Secretion](#), [Production of Molecular Mediator of Immune Response](#), [CXCR4-mediated Signaling Events](#), [Cancer Immune Checkpoints](#), [Human Leukocyte Antigen \(HLA\) in Adaptive Immune Response](#)

## Application Details

Application Notes: Immunohistology formalin-fixed 0.25-0.5 µg/mL

- Staining of formalin-fixed tissues is enhanced by boiling tissue sections in 10 mM citrate buffer, pH 6.0, for 10-20 min followed by cooling at RT for 20 minutes
- Immunofluorescence 0.5-1 µg/mL
- Flow Cytometry 0.5-1 µg/million cells/0.1 mL
- Western blotting 0.5-1 µg/mL
- Optimal dilution for a specific application should be determined by user

Comment: Ramos, Daudi or HuT78 cells. Tonsil or lymph node

Restrictions: For Research Use only

Handling

Format:	Liquid
Concentration:	1 mg/mL
Buffer:	PBS (no BSA, no azide)
Preservative:	Azide free

Images

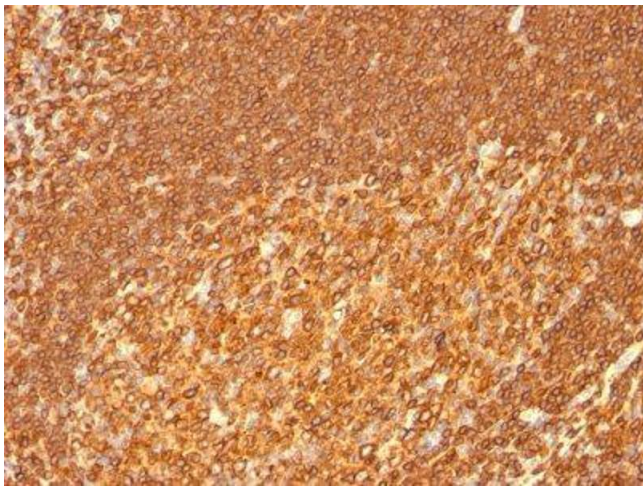


Image 1.

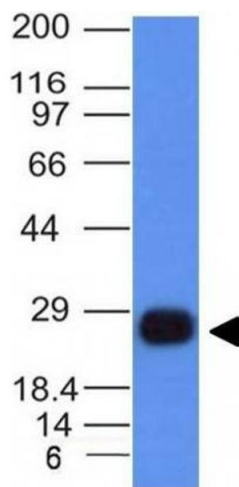
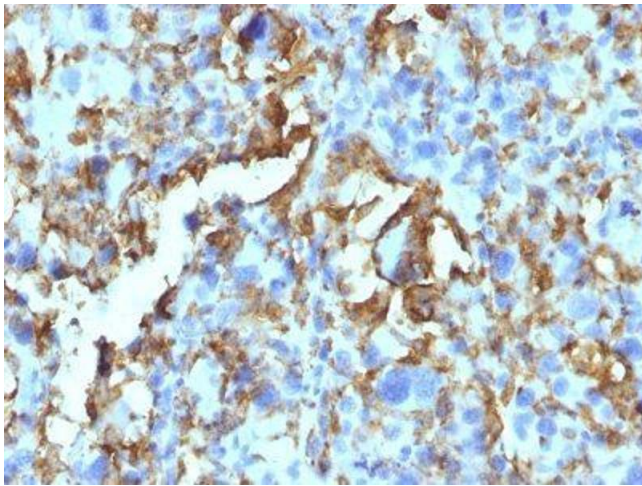


Image 2.



**Image 3.**