

Datasheet for ABIN618825

## RAD23A Protein (AA 2-201, partial) (GST tag)



[Go to Product page](#)

### 1 Image

#### Overview

Quantity:	1 mg
Target:	RAD23A
Protein Characteristics:	AA 2-201, partial
Origin:	Human
Source:	Escherichia coli (E. coli)
Protein Type:	Recombinant
Purification tag / Conjugate:	This RAD23A protein is labelled with GST tag.
Application:	SDS-PAGE (SDS), ELISA, Western Blotting (WB)

#### Product Details

Sequence:	AVTITLCTLQ QQTFKIRMEP DETVKVLKEK IEAEKGRDAF PVAGQKLIYA GKILSDDVPI RDYRIDEKNF VVVMVTKTKA GQGTSAPPEA SPTAAPESST SFPPAPTSGM SHPPPAARED KSPSEESAPT TSPESVSGSV PSSGSSGREE DAASTLVTGS EYETMLTEIM SMGYERERVV AALRASYN NP HRAVEYLLTG
Purity:	95 %

#### Target Details

Target:	RAD23A
Alternative Name:	UV excision repair protein RAD23 homolog A ( <a href="#">RAD23A Products</a> )
Background:	Background: Multiubiquitin chain receptor involved in modulation of proteasomal degradation. Binds to 'Lys-48'-linked polyubiquitin chains in a length-dependent manner and with a lower

## Target Details

affinity to 'Lys-63'-linked polyubiquitin chains. Proposed to be capable to bind simultaneously to the 26S proteasome and to polyubiquitinated substrates and to deliver ubiquitinated proteins to the proteasome. Ref.6 Ref.9 Ref.10 Ref.11 Ref.20 Involved in nucleotide excision repair and is thought to be functional equivalent for RAD23B in global genome nucleotide excision repair (GG-NER) by association with XPC. In vitro, the XPC:RAD23A dimer has NER activity. Can stabilize XPC. Ref.6 Ref.9 Ref.10 Ref.11 Ref.20 Involved in vpr-dependent replication of HIV-1 in non-proliferating cells and primary macrophages. Required for the association of HIV-1 vpr with the host proteasome. Synonyms: Short name=HR23A Short name=hHR23A

Molecular Weight: 48.8 kD

NCBI Accession: [NM\\_005053](#)

UniProt: [P54725](#)

Pathways: [DNA Damage Repair](#)

## Application Details

Restrictions: For Research Use only

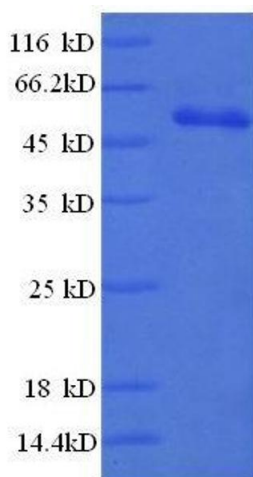
## Handling

Format: Lyophilized

Buffer: PBS buffer, 20mM GSH

Storage: 4 °C

## Images



### SDS-PAGE

Image 1.