

Datasheet for ABIN618894

MFGE8 Protein (AA 25-334, partial) (GST tag)[Go to Product page](#)**1** Image

Overview

Quantity:	1 mg
Target:	MFGE8
Protein Characteristics:	AA 25-334, partial
Origin:	Human
Source:	Escherichia coli (E. coli)
Protein Type:	Recombinant
Purification tag / Conjugate:	This MFGE8 protein is labelled with GST tag.
Application:	Western Blotting (WB), SDS-PAGE (SDS), ELISA

Product Details

Sequence: DICKSNPCHN GGLCEEISQE VRGDVFPSYT CTCLKGYAGN HCETKCVEPL GMENGNANS
QIAASSVRVT FLGLQHWVPE LARLN RAGMV NAWTPSSNDD NPWIQVNLRL RMWVTGVVTQ
GASRLASHEY LKAFKVAYSL NGHEFDFIHD VNKKHKEFVG NWNKNAVHVN LFETPVEAQY
VRLYPTSCHT ACTLRFELLG CELNGCANPL GLKNNSIPDK QITASSSYKT WGLHLFSWNP
SYARLDKQGN FNAWVAGSYG NDQWLQIFPG NWDNHSHKKN LFETPILARY VRILPVAWHN
RIALRLELLG

Purity: 95 %

Target Details

Target:	MFGE8
Alternative Name:	Lactadherin (MFGE8 Products)

Target Details

Background: Background: Plays an important role in the maintenance of intestinal epithelial homeostasis and the promotion of mucosal healing. Promotes VEGF-dependent neovascularization By similarity. Contributes to phagocytic removal of apoptotic cells in many tissues. Specific ligand for the alpha-v/beta-3 and alpha-v/beta-5 receptors. Also binds to phosphatidylserine-enriched cell surfaces in a receptor-independent manner. Zona pellucida-binding protein which may play a role in gamete interaction. Binds specifically to rotavirus and inhibits its replication. Ref.15 Medin is the main constituent of aortic medial amyloid. Synonyms: Breast epithelial antigen BA46 HMFG MFGM Milk fat globule-EGF factor 8 Short name=MFG-E8 SED1 Cleaved into the following 2 chains: Lactadherin short form Medin.

Molecular Weight: 62.4 kD

NCBI Accession: [NM_005928](#)

UniProt: [Q08431](#)

Pathways: [SARS-CoV-2 Protein Interactome](#)

Application Details

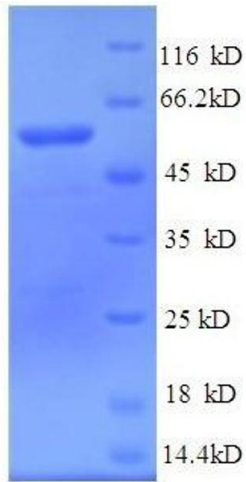
Restrictions: For Research Use only

Handling

Format: Lyophilized

Buffer: PBS buffer, 20mM GSH

Storage: 4 °C



SDS-PAGE

Image 1.