



Datasheet for ABIN618925

PEB (4x), protein extraction buffer



[Go to Product page](#)

1 Image

Overview

Quantity:	5 x 2 mL
Application:	Protein Extraction (PEX)

Product Details

Characteristics:	PEB is an extraction buffer for disruption and solubilisation of total protein from plant tissue and algal cells. The use of the anionic detergent LDS together with the recommended procedure (combination of sonication and freeze/thaw cycles) has been shown to increase the number of solubilised and non-degraded proteins when compared to other methods of cell disruption (see reference). The estimated hands-on time for the recommended procedure is 20-30 minutes for 1-2 samples. Expected yields will be 1.5-6 µg/µl total protein (recovered from standard procedure) depending on the starting material.
------------------	---

Application Details

Restrictions:	For Research Use only
---------------	-----------------------

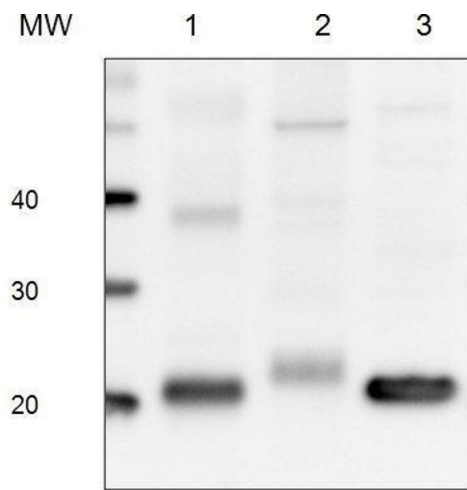
Handling

Format:	Liquid
Concentration:	4 X
Buffer:	Buffer containing approx. 40 % v/v glycerol, TrisHCl pH 8.5, LDS, EDTA
Handling Advice:	Please, remember to spin tubes briefly prior to opening them to avoid any losses that might occur from liquid material adhering to the cap or sides of the tubes. Make aliquots to avoid repeated freeze-thaw cycles and working with a stock.

Handling

Storage: 4 °C

Images



Western Blotting

Image 1.