



[Go to Product page](#)

Datasheet for ABIN6219602

anti-Ephrin B1 antibody (AA 28-237)

1 Image

Overview

Quantity:	20 µL
Target:	Ephrin B1 (EFNB1)
Binding Specificity:	AA 28-237
Reactivity:	Human
Host:	Rabbit
Clonality:	Polyclonal
Conjugate:	This Ephrin B1 antibody is un-conjugated
Application:	Western Blotting (WB)

Product Details

Immunogen:	Recombinant fusion protein containing a sequence corresponding to amino acids 28-237 of human EFNB1 (NP_004420.1).
Sequence:	LAKNLEPVSWSLNPKFLSGKGLVIYPKIGDKLDIICPRAEAGRPYEYKLYLVRPEQAA ACSTVLDPNVLVTCNRPEQEIRFTIKFQEFSPNYMGLEFKKHHDYYITSTSNGSLEGLN REGGVCRTRTMKIIMKVGQDPNAVTPPEQLTTSRPSKEADNTVKMATQAPGSRGSLGDSGDG KHETVNQEEKSGPGASGGSSGDPDGGFFNSK
Isotype:	IgG
Cross-Reactivity:	Human, Mouse
Characteristics:	Polyclonal Antibodies
Purification:	Affinity purification

Target Details

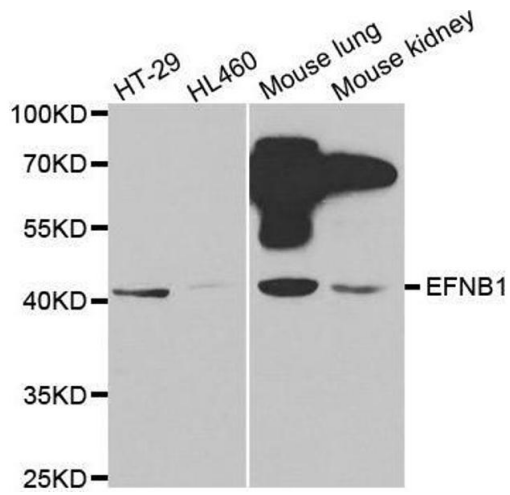
Target:	Ephrin B1 (EFNB1)
Alternative Name:	EFNB1 (EFNB1 Products)
Background:	The protein encoded by this gene is a type I membrane protein and a ligand of Eph-related receptor tyrosine kinases. It may play a role in cell adhesion and function in the development or maintenance of the nervous system.,EFNB1,CFND,CFNS,EFB1,EFL3,EPLG2,Elk-L,LERK2,efrin-B1,Signal Transduction,Kinase,Tyrosine kinases,Cell Biology & Developmental Biology,Neuroscience,EFNB1
Molecular Weight:	38 kDa
Gene ID:	1947
UniProt:	P98172
Pathways:	RTK Signaling

Application Details

Application Notes:	WB,1:500 - 1:2000
Restrictions:	For Research Use only

Handling

Buffer:	PBS with 0.02 % sodium azide,50 % glycerol, pH 7.3.
Preservative:	Sodium azide
Precaution of Use:	This product contains Sodium azide: a POISONOUS AND HAZARDOUS SUBSTANCE which should be handled by trained staff only.
Storage:	-20 °C
Storage Comment:	Store at -20°C. Avoid freeze / thaw cycles.



Western Blotting

Image 1. Western blot analysis of extracts of various cell lines, using EFNB1 antibody.