



[Go to Product page](#)

Datasheet for ABIN6219970

## anti-Kallikrein 2 antibody (AA 25-250)

### 3 Images

#### Overview

Quantity:	20 µL
Target:	Kallikrein 2 (KLK2)
Binding Specificity:	AA 25-250
Reactivity:	Human
Host:	Rabbit
Clonality:	Polyclonal
Conjugate:	This Kallikrein 2 antibody is un-conjugated
Application:	Western Blotting (WB)

#### Product Details

Immunogen:	Recombinant fusion protein containing a sequence corresponding to amino acids 25-250 of human KLK2 (NP_005542.1).
Sequence:	IVGGWECEKH SQPWQVAVYS HGWAHCGGVL VHPQWVLTA HCLKKNSQVW LGRHNLFEPE DTGQRVPVSH SFPHPLYNMS LLKHQSLRPD EDSSHDMLL RLSEPAKITD VVKVLGLPTQ EPALGTTCYA SGWGSIEPEE FLRPRSLQCV SLHLLSNDMC ARAYSEKVTE FMLCAGLWTG GKDTCGGDSG GPLVCNGVLQ GITSWGPEPC ALPEKPAVYT KVVHYR
Isotype:	IgG
Cross-Reactivity:	Human, Mouse
Characteristics:	Polyclonal Antibodies

## Target Details

---

Target:	Kallikrein 2 (KLK2)
Alternative Name:	KLK2 ( <a href="#">KLK2 Products</a> )
Background:	This gene encodes a member of the grandular kallikrein protein family. Kallikreins are a subgroup of serine proteases that are clustered on chromosome 19. Members of this family are involved in a diverse array of biological functions. The protein encoded by this gene is a highly active trypsin-like serine protease that selectively cleaves at arginine residues. This protein is primarily expressed in prostatic tissue and is responsible for cleaving pro-prostate-specific antigen into its enzymatically active form. This gene is highly expressed in prostate tumor cells and may be a prognostic maker for prostate cancer risk. Alternate splicing results in both coding and non-coding transcript variants.,KLK2,KLK2A2,hGK-1,hK2,Cancer,Invasion and Metastasis,Signal Transduction,Cell Biology & Developmental Biology,Cytoskeleton,Extracellular Matrix,Ubiquitin,KLK2
Molecular Weight:	17 kDa/18 kDa/24 kDa/28 kDa
Gene ID:	3817
UniProt:	<a href="#">P20151</a>
Pathways:	<a href="#">Complement System</a>

## Application Details

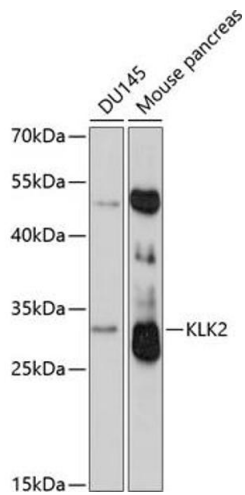
---

Application Notes:	WB,1:500 - 1:2000
Restrictions:	For Research Use only

## Handling

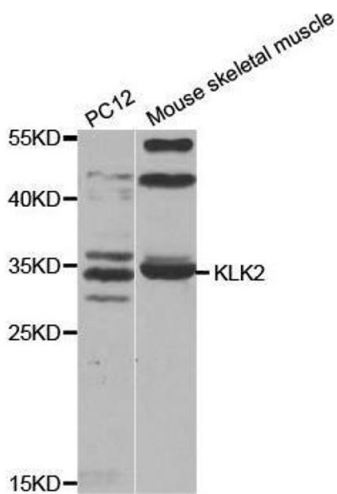
---

Buffer:	PBS with 0.02 % sodium azide,50 % glycerol, pH 7.3.
Preservative:	Sodium azide
Precaution of Use:	This product contains Sodium azide: a POISONOUS AND HAZARDOUS SUBSTANCE which should be handled by trained staff only.
Storage:	-20 °C
Storage Comment:	Store at -20°C. Avoid freeze / thaw cycles.



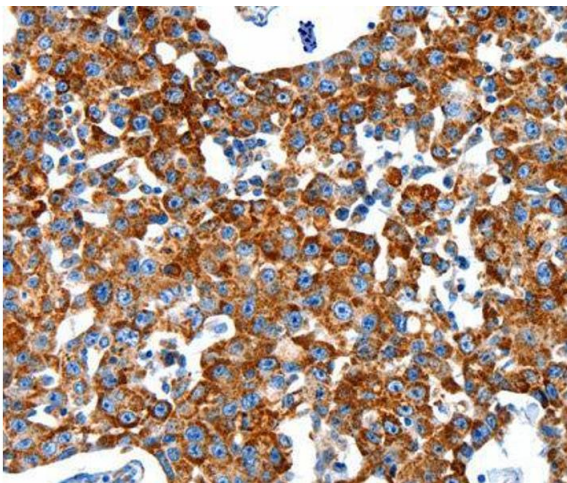
### Western Blotting

**Image 1.** Western blot analysis of extracts of various cell lines, using KLK2 antibody (ABIN3017126, ABIN3017127, ABIN1680612 and ABIN6219970) at 1:3000 dilution. Secondary antibody: HRP Goat Anti-Rabbit IgG (H+L) (ABIN1684268 and ABIN3020597) at 1:10000 dilution. Lysates/proteins: 25 µg per lane. Blocking buffer: 3 % nonfat dry milk in TBST. Detection: ECL Basic Kit (RM00020). Exposure time: 90s.



### Western Blotting

**Image 2.** Western blot analysis of extracts of HeLa cell lysate, using KLK2 antibody.



### Immunohistochemistry

**Image 3.**