

Datasheet for ABIN6221701
anti-EIF4G1 antibody (AA 400-500)



[Go to Product page](#)

2 Images

Overview

Quantity:	20 µL
Target:	EIF4G1
Binding Specificity:	AA 400-500
Reactivity:	Human
Host:	Rabbit
Clonality:	Polyclonal
Conjugate:	This EIF4G1 antibody is un-conjugated
Application:	Immunohistochemistry (IHC), Western Blotting (WB)

Product Details

Immunogen:	A synthetic peptide corresponding to a sequence within amino acids 400-500 of human EIF4G (NP_886553.3).
Sequence:	PEELNGAPS PPAVDLSPVS EP EEQAKEVT ASMAPPTIPS ATPATAPSAT SPAQEEEMEE EEEEEEGEAG EAGEAESEKG GEELLPPPEST PIPANLSQNL E
Isotype:	IgG
Cross-Reactivity:	Human
Characteristics:	Polyclonal Antibodies
Purification:	Affinity purification

Target Details

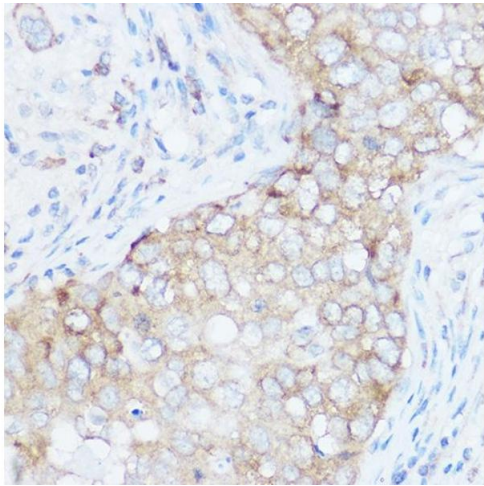
Target:	EIF4G1
Alternative Name:	EIF4G1 (EIF4G1 Products)
Background:	<p>The protein encoded by this gene is a component of the multi-subunit protein complex EIF4F. This complex facilitates the recruitment of mRNA to the ribosome, which is a rate-limiting step during the initiation phase of protein synthesis. The recognition of the mRNA cap and the ATP-dependent unwinding of 5'-terminal secondary structure is catalyzed by factors in this complex. The subunit encoded by this gene is a large scaffolding protein that contains binding sites for other members of the EIF4F complex. A domain at its N-terminus can also interact with the poly(A)-binding protein, which may mediate the circularization of mRNA during translation. Alternative splicing results in multiple transcript variants, some of which are derived from alternative promoter usage.,EIF4G1,EIF-4G1,EIF4F,EIF4G,EIF4GI,P220,PARK18,Epigenetics & Nuclear Signaling,RNA Binding,Translation Control,Regulation of eIF4 and p70 S6 Kinase,Signal Transduction,PI3K-Akt Signaling Pathway,Immunology & Inflammation,Akt downstream targets,EIF4G1</p>
Molecular Weight:	154 kDa/158 kDa/166 kDa/171 kDa/175 kDa/176 kDa
Gene ID:	1981
UniProt:	Q04637

Application Details

Application Notes:	WB,1:500 - 1:1000,IHC,1:50 - 1:200
Restrictions:	For Research Use only

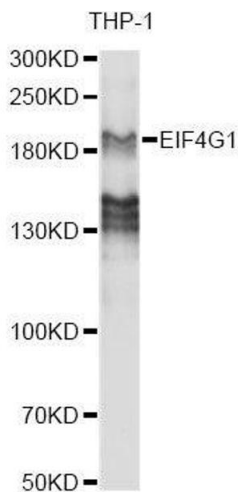
Handling

Format:	Liquid
Buffer:	PBS with 0.02 % sodium azide,50 % glycerol, pH 7.3.
Preservative:	Sodium azide
Precaution of Use:	This product contains Sodium azide: a POISONOUS AND HAZARDOUS SUBSTANCE which should be handled by trained staff only.
Storage:	-20 °C
Storage Comment:	Store at -20°C. Avoid freeze / thaw cycles.



Immunohistochemistry

Image 1. Immunohistochemistry of paraffin-embedded human breast cancer using EIF4G1 Rabbit pAb (ABIN6134646, ABIN6140092, ABIN6140093 and ABIN6221701) at dilution of 1:100 (40x lens). Perform high pressure antigen retrieval with 10 mM citrate buffer pH 6.0 before commencing with IHC staining protocol.



Western Blotting

Image 2. Western blot analysis of extracts of various cell lines, using EIF4G antibody.