



[Go to Product page](#)

Datasheet for ABIN6238721

## DC-SIGN/CD209 Protein (AA 70-404) (T7 tag,His tag)

### 1 Image

#### Overview

Quantity:	50 µg
Target:	DC-SIGN/CD209 (CD209)
Protein Characteristics:	AA 70-404
Origin:	Human
Source:	Escherichia coli (E. coli)
Protein Type:	Recombinant
Purification tag / Conjugate:	This DC-SIGN/CD209 protein is labelled with T7 tag,His tag.
Application:	ELISA, Western Blotting (WB), SDS-PAGE (SDS), Immunoprecipitation (IP)

#### Product Details

Characteristics:	Tag location: two N-terminal Tags, His-tag and T7-tag
Purity:	≥ 94 %

#### Target Details

Target:	DC-SIGN/CD209 (CD209)
Alternative Name:	C-Type Lectin Domain Family 4, Member L (CLEC4L) ( <a href="#">CD209 Products</a> )
Background:	Alternative Names: CD209, DC-SIGN, CDSIGN, Dendritic Cell-Specific Intercellular Adhesion Molecule-3-Grabbing Non-Integrin
Molecular Weight:	42.0kDa
UniProt:	<a href="#">Q9NNX6</a>

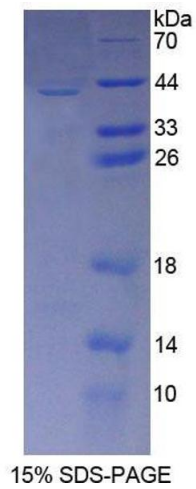
## Application Details

---

Restrictions: For Research Use only

## Images

---



### SDS-PAGE

Image 1.