



Datasheet for ABIN6238744

Arx Protein (AA 25-246) (T7 tag,His tag)



[Go to Product page](#)

1 Image

Overview

Quantity:	50 µg
Target:	Arx (ARX)
Protein Characteristics:	AA 25-246
Origin:	Human
Source:	Escherichia coli (E. coli)
Protein Type:	Recombinant
Purification tag / Conjugate:	This Arx protein is labelled with T7 tag,His tag.
Application:	ELISA, Western Blotting (WB), SDS-PAGE (SDS), Immunoprecipitation (IP)

Product Details

Characteristics:	Tag location: two N-terminal Tags, His-tag and T7-tag
Purity:	≥ 96 %

Target Details

Target:	Arx (ARX)
Alternative Name:	Aristaless Related Homeobox Protein (ARX) (ARX Products)
Background:	Alternative Names: ARX, ISSX, MRX29, MRX32, MRX33, MRX36, MRX38, MRX43, MRX54, MRXS1, PRTS, Mental Retardation,X-linked 54
Molecular Weight:	25.8kDa
UniProt:	Q96QS3

Application Details

Restrictions: For Research Use only

Images

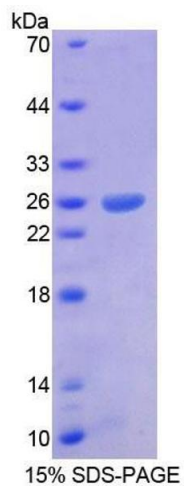


Image 1.