

Datasheet for ABIN6238874

SRPRB Protein (AA 56-269) (T7 tag,His tag)



[Go to Product page](#)

1 Image

Overview

Quantity:	50 µg
Target:	SRPRB
Protein Characteristics:	AA 56-269
Origin:	Mouse
Source:	Escherichia coli (E. coli)
Protein Type:	Recombinant
Purification tag / Conjugate:	This SRPRB protein is labelled with T7 tag,His tag.
Application:	ELISA, Western Blotting (WB), SDS-PAGE (SDS), Immunoprecipitation (IP)

Product Details

Characteristics:	Tag location: two N-terminal Tags, His-tag and T7-tag
Purity:	> 95 %

Target Details

Target:	SRPRB
Alternative Name:	Signal Recognition Particle Receptor B (SRPRB) (SRPRB Products)
Background:	Alternative Names: APMCF1
Molecular Weight:	27.3kDa
UniProt:	P47758
Pathways:	ER-Nucleus Signaling

Application Details

Restrictions: For Research Use only

Images

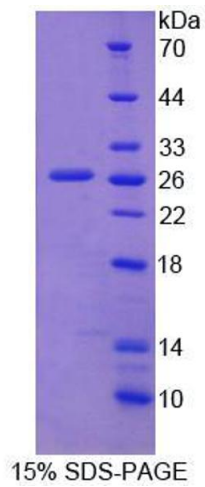


Image 1.