



[Go to Product page](#)

Datasheet for ABIN6239359
ABCD1 Protein (AA 102-386)

1 Image

Overview

Quantity:	50 µg
Target:	ABCD1
Protein Characteristics:	AA 102-386
Origin:	Human
Source:	Escherichia coli (E. coli)
Protein Type:	Recombinant
Application:	ELISA, Western Blotting (WB), SDS-PAGE (SDS), Immunoprecipitation (IP)

Product Details

Purity: > 90 %

Target Details

Target:	ABCD1
Alternative Name:	ATP Binding Cassette Transporter D1 (ABCD1) (ABCD1 Products)
Background:	Alternative Names: ABC-D1, ABC42, ALD, ALDP, AMN, Adrenoleukodystrophy protein, ATP-Binding Cassette,Subfamily D(ALD)Member 1
Molecular Weight:	62.1kDa
UniProt:	P33897
Pathways:	Monocarboxylic Acid Catabolic Process

Application Details

Restrictions: For Research Use only

Images

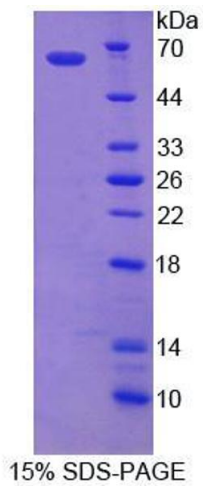


Image 1.