



[Go to Product page](#)

Datasheet for ABIN6239558

## CDC27 Protein (AA 17-231) (T7 tag,His tag)

### 1 Image

#### Overview

Quantity:	50 µg
Target:	CDC27
Protein Characteristics:	AA 17-231
Origin:	Human
Source:	Escherichia coli (E. coli)
Protein Type:	Recombinant
Purification tag / Conjugate:	This CDC27 protein is labelled with T7 tag,His tag.
Application:	ELISA, SDS-PAGE (SDS), Western Blotting (WB), Immunoprecipitation (IP)

#### Product Details

Characteristics:	Tag location: two N-terminal Tags, His-tag and T7-tag
Purity:	> 90 %

#### Target Details

Target:	CDC27
Alternative Name:	Cell Division Cycle Protein 27 (CDC27) ( <a href="#">CDC27 Products</a> )
Background:	Alternative Names: APC3, ANAPC3, CDC27Hs, HNUC, Anaphase Promoting Complex Subunit 3
Molecular Weight:	27.9kDa
UniProt:	<a href="#">P30260</a>

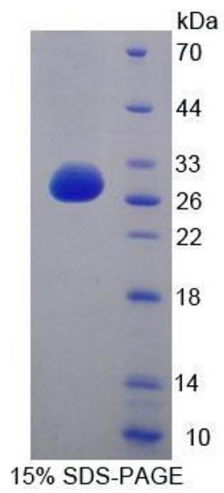
## Application Details

---

Restrictions: For Research Use only

## Images

---



**Image 1.**