

Datasheet for ABIN6239708
MCEE Protein (AA 39-178) (His tag)



[Go to Product page](#)

1 Image

Overview

Quantity:	50 µg
Target:	MCEE
Protein Characteristics:	AA 39-178
Origin:	Mouse
Source:	Escherichia coli (E. coli)
Protein Type:	Recombinant
Purification tag / Conjugate:	This MCEE protein is labelled with His tag.
Application:	Western Blotting (WB), SDS-PAGE (SDS), Immunogen (Imm), Positive Control (PC)

Product Details

Characteristics:	Tag location: N-terminal His-tag
Purity:	> 95 %

Target Details

Target:	MCEE
Alternative Name:	Methylmalonyl Coenzyme A Epimerase (MCEE) (MCEE Products)
Background:	Alternative Names: GLOD2, Glyoxalase Domain Containing 2, DL-methylmalonyl-CoA racemase
Molecular Weight:	18.8kDa
UniProt:	Q9D115
Pathways:	Monocarboxylic Acid Catabolic Process

Application Details

Application Notes: Isoelectric Point: 6.7

Restrictions: For Research Use only

Handling

Format: Lyophilized

Buffer: PBS, pH 7.4, containing 0.01 % SKL, 1 mM DTT, 5 % Trehalose and Proclin300.

Preservative: Dithiothreitol (DTT), ProClin

Precaution of Use: This product contains ProClin and Dithiothreitol (DTT): POISONOUS AND HAZARDOUS SUBSTANCES which should be handled by trained staff only.

Images

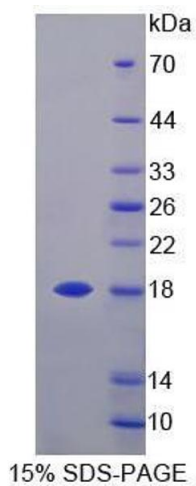


Image 1.