

[Go to Product page](#)

Datasheet for ABIN6239743

**LMTK3 Protein (AA 133-411) (His tag)****2** Images

## Overview

Quantity:	50 µg
Target:	LMTK3
Protein Characteristics:	AA 133-411
Origin:	Human
Source:	Escherichia coli (E. coli)
Biological Activity:	Active
Purification tag / Conjugate:	This LMTK3 protein is labelled with His tag.
Application:	Activity Assay (AcA), Cell Culture (CC)

## Product Details

Characteristics:	Tag location: N-terminal His Tag
Purity:	> 95 %
Biological Activity Comment:	Lemur tyrosine kinase 3 (LMTK3), a member of the receptor tyrosine kinase (RTK) family, is implicated in breast cancer growth and endocrine resistance. It has been reported that LMTK3 promotes cell invasion, motility, and migration of the MCF-7 breast cancer cell line. To test the bioactivity of LMTK3, MCF-7 cells were seeded into triplicate wells of 96-well plates at a density of 2,000 cells/well and allowed to attach overnight, then the medium was replaced with serum-free standard DMEM prior to the addition of various concentrations of LMTK3. After incubated for 72h, cells were observed by inverted microscope and cell proliferation was measured by Cell Counting Kit-8 (CCK-8). Briefly, 10 µL of CCK-8 solution was added to each well of the plate, then measure the absorbance at 450nm using a microplate reader after incubating the plate for 1-4 hours at 37°C. Cell proliferation of MCF-7 cells after incubation with LMTK3 for 72h

## Product Details

---

observed by inverted microscope was shown in Figure 1.

## Target Details

---

Target:	LMTK3
Abstract:	<a href="#">LMTK3 Products</a>
Background:	Alternative Names: LMR3, TYKLM3, Serine/threonine-protein kinase LMTK3
Molecular Weight:	46kDa
UniProt:	<a href="#">Q96Q04</a>

## Application Details

---

Application Notes:	Isoelectric Point: 6.3
Restrictions:	For Research Use only

## Handling

---

Format:	Lyophilized
Buffer:	20 mM Tris, 150 mM NaCl, pH 8.0, containing 1 mM EDTA, 1 mM DTT, 0.01 % SKL, 5 % Trehalose and Proclin300.
Preservative:	Dithiothreitol (DTT), Other preservative, ProClin
Precaution of Use:	This product contains ProClin and Dithiothreitol (DTT): POISONOUS AND HAZARDOUS SUBSTANCES which should be handled by trained staff only.

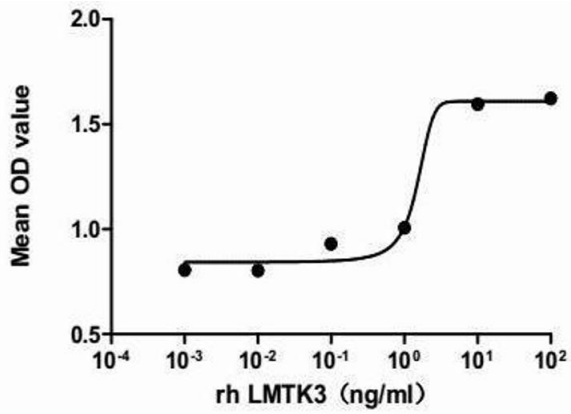
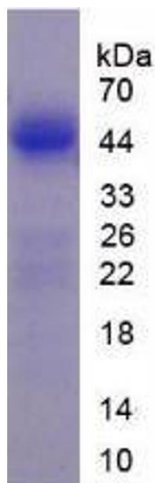


Figure 2. The dose-effect curve of LMTK3 on MCF-7 cells

**Image 1.** The dose-effect curve of LMTK3 was shown in Figure 2. It was obvious that LMTK3 significantly promoted cell proliferation of MCF-7 cells. The ED50 for this effect is approximately 6.14~50ng/mL.



**Image 2.**