

[Go to Product page](#)

Datasheet for ABIN6239749

**KIT Ligand Protein (KITLG) (AA 25-191) (His tag)****2** Images

## Overview

|                               |   |
|-------------------------------|---|
| Quantity:                     | 50 µg   |
| Target:                       | KIT Ligand (KITLG)                                |
| Protein Characteristics:      | AA 25-191   |
| Origin:                       | Pig   |
| Source:                       | HEK-293 Cells                                     |
| Biological Activity:          | Active  |
| Purification tag / Conjugate: | This KIT Ligand protein is labelled with His tag. |
| Application:                  | Cell Culture (CC), Activity Assay (AcA)           |

## Product Details

|                              |   |
|------------------------------|---|
| Characteristics:             | Tag location: N-terminal His Tag  |
| Purity:                      | > 95 %  |
| Biological Activity Comment: | <p>Stem cell factor (SCF), also known as mast cell growth factor (MGF), and steel factor (SLF), plays an important role in hematopoiesis, spermatogenesis, and melanogenesis. SCF has been shown to stimulate the proliferation of TF-1 cells. To test this effect, TF-1 cells were seeded into triplicate wells of 96-well plates at a density of 1x10<sup>4</sup>cells/well and incubated for 72h in the presence or absence of various concentrations of SCF at 37oC. The growth of cells were observed by inverted microscope and cell proliferation was measured by Cell Counting Kit-8 (CCK-8). Briefly, 10µL of CCK-8 solution was added to each well of the plate, then measure the absorbance at 450nm using a microplate reader after incubating the plate for 1-4 hours at 37oC. Cell proliferation of TF-1 cells after incubation with SCF for 72h observed by inverted microscope was shown in Figure 1.</p> |

## Target Details

|                   |   |
|-------------------|---|
| Target:           | KIT Ligand (KITLG)  |
| Alternative Name: | Stem Cell Factor (SCF) ( <a href="#">KITLG Products</a> )   |
| Background:       | Alternative Names: KITLG, MGF, SF, KL1, Kitl, FPH2, Kit-Ligand, Steel Factor, Mast Cell Growth Factor, Steel factor, Familial Progressive Hyperpigmentation 2                   |
| Molecular Weight: | 20kDa   |
| UniProt:          | <a href="#">P20826</a>  |
| Pathways:         | <a href="#">RTK Signaling</a> , <a href="#">Fc-epsilon Receptor Signaling Pathway</a> , <a href="#">EGFR Signaling Pathway</a> , <a href="#">Neurotrophin Signaling Pathway</a> |

## Application Details

|                    |                        |
|--------------------|------------------------|
| Application Notes: | Isoelectric Point: 5.3 |
| Restrictions:      | For Research Use only  |

## Handling

|                    |   |
|--------------------|---|
| Format:            | Lyophilized   |
| Buffer:            | PBS, pH 7.4, containing 0.01 % SKL, 1 mM DTT, 5 % Trehalose and Proclin300.   |
| Preservative:      | Dithiothreitol (DTT), ProClin   |
| Precaution of Use: | This product contains ProClin and Dithiothreitol (DTT): POISONOUS AND HAZARDOUS SUBSTANCES which should be handled by trained staff only. |

## Images

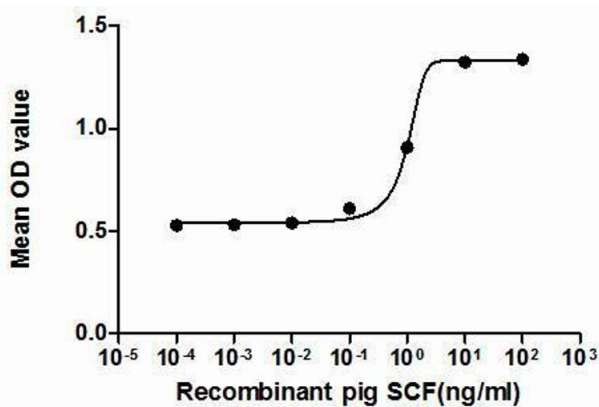


Figure 2. The dose-effect curve of SCF on TF-1 cells

**Image 1.** The dose-effect curve of SCF was shown in Figure 2. It was obvious that it significantly promoted cell proliferation of TF-1 cells. The ED50 for this effect is typically 6.07 to 13.69ng/mL.

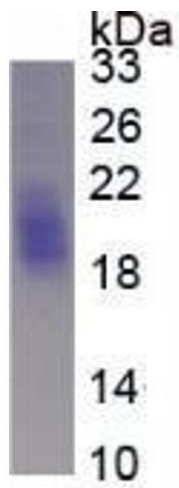


Image 2.