

Datasheet for ABIN6239765

GAS6 Protein (AA 136-311) (His tag)[Go to Product page](#)**2** Images

Overview

Quantity:	50 µg
Target:	GAS6
Protein Characteristics:	AA 136-311
Origin:	Human
Source:	Escherichia coli (E. coli)
Biological Activity:	Active
Purification tag / Conjugate:	This GAS6 protein is labelled with His tag.
Application:	Activity Assay (AcA), Cell Culture (CC)

Product Details

Characteristics:	Tag location: N-terminal His Tag
Purity:	> 90 %
Biological Activity Comment:	Growth arrest-specific 6, also known as GAS6, is a gamma-carboxyglutamic acid (Gla) domain-containing protein thought to be involved in the stimulation of cell proliferation. It has been reported that both PC-3 and DU 145 human prostate cancer cell lines are stimulated to proliferate by Gas6, however, this proliferative response strictly correlates with the expression of the Axl receptor, being higher in DU 145 cells. To test the proliferative effect of Gas6, DU 145 cells were seeded into triplicate wells of 96-well plates at a density of 2,000 cells/well and allowed to attach overnight, then the medium was replaced with serum-free standard DMEM prior to the addition of various concentrations of GAS6. After incubated for 72h, cells were observed by inverted microscope and cell proliferation was measured by Cell Counting Kit-8 (CCK-8). Briefly, 10µL of CCK-8 solution was added to each well of the plate, then measure the

Product Details

absorbance at 450nm using a microplate reader after incubating the plate for 1-4 hours at 37°C. Cell proliferation of DU145 cells after incubation with GAS6 for 72h observed by inverted microscope was shown in Figure 1.

Target Details

Target:	GAS6
Alternative Name:	Growth Arrest Specific Protein 6 (GAS6) (GAS6 Products)
Background:	Alternative Names: AXLLG, AXSF, AXL Stimulatory Factor, AXL receptor tyrosine kinase ligand
Molecular Weight:	24kDa
UniProt:	Q14393
Pathways:	RTK Signaling , Carbohydrate Homeostasis , Production of Molecular Mediator of Immune Response

Application Details

Application Notes:	Isoelectric Point: 5.6
Restrictions:	For Research Use only

Handling

Format:	Lyophilized
Buffer:	20 mM Tris, 150 mM NaCl, pH 8.0, containing 1 mM EDTA, 1 mM DTT, 0.01 % SKL, 5 % Trehalose and Proclin300.
Preservative:	Dithiothreitol (DTT), Other preservative, ProClin
Precaution of Use:	This product contains ProClin and Dithiothreitol (DTT): POISONOUS AND HAZARDOUS SUBSTANCES which should be handled by trained staff only.

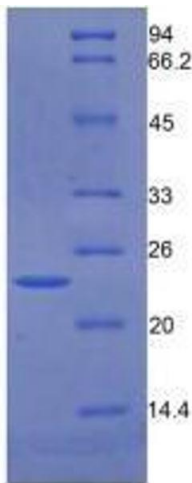


Image 1.

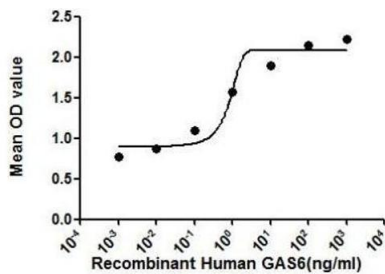


Figure 2. Cell proliferation of DU145 cells after stimulated with GAS6 detected by CCK8.

Image 2. The dose-effect curve of GAS6 was shown in Figure 2. It was obvious that GAS6 significantly promoted cell proliferation of DU145 cells. The ED50 for this effect is typically 0.77~38.08ng/mL.