

Datasheet for ABIN6239825

**CLCA1 Protein (AA 416-670) (His tag)**[Go to Product page](#)**1** Image

## Overview

Quantity:	50 µg
Target:	CLCA1
Protein Characteristics:	AA 416-670
Origin:	Human
Source:	Escherichia coli (E. coli)
Biological Activity:	Active
Purification tag / Conjugate:	This CLCA1 protein is labelled with His tag.
Application:	Activity Assay (AcA), Cell Culture (CC)

## Product Details

Characteristics:	Tag location: N-terminal His Tag
Purity:	> 97 %
Biological Activity Comment:	<p>CLCA1 (Calcium-activated chloride channel regulator 1) is a member of the calcium sensitive chloride conductance protein family. This protein is expressed as a precursor protein that is processed into two cell-surface-associated subunits. It has been reported that CLCA1 activates calcium-dependent chloride channel through the interaction with TMEM16A (anoctamin-1). Besides, there exists similarities between human and mouse TMEM16A in amino acid sequence with the identity of 89.66%. Thus, a functional ELISA assay was conducted to detect the association of recombinant human CLCA1 with recombinant mouse TMEM16A. Briefly, CLCA1 were diluted serially in PBS with 0.01%BSA (pH 7.4). Duplicate samples of 100uL were then transferred to TMEM16A-coated microtiter wells and incubated for 2h at 37°C. Wells were washed with PBST and incubated for 1h with anti-CLCA1 pAb, then aspirated and washed 3</p>

## Product Details

times. After incubation with HRP labelled secondary antibody, wells were aspirated and washed 3 times. With the addition of substrate solution, wells were incubated 15-25 minutes at 37°C. Finally, add 50µL stop solution to the wells and read at 450nm immediately. The binding activity of CLCA1 with TMEM16A was shown in Figure 1 and this effect was in a dose dependent manner The binding activity of CLCA1 with TMEM16A

## Target Details

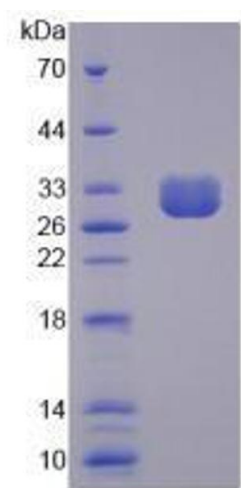
Target:	CLCA1
Abstract:	<a href="#">CLCA1 Products</a>
Background:	Alternative Names: CaCC1, CLCRG1, Chloride Channel, Calcium Activated, Family Member 1, Calcium-activated chloride channel protein 1
Molecular Weight:	28kDa
UniProt:	<a href="#">A8K7I4</a>

## Application Details

Application Notes:	Isoelectric Point: 7.1
Restrictions:	For Research Use only

## Handling

Format:	Lyophilized
Buffer:	PBS, pH 7.4, containing 0.01 % SKL, 1 mM DTT, 5 % Trehalose and Proclin300.
Preservative:	Dithiothreitol (DTT), ProClin
Precaution of Use:	This product contains ProClin and Dithiothreitol (DTT): POISONOUS AND HAZARDOUS SUBSTANCES which should be handled by trained staff only.



SDS-PAGE

**Image 1.** Figure. SDS-PAGE; Sample: Active recombinant CLCA1, Human.