

Datasheet for ABIN6239838

DGKE Protein (AA 243-502) (His tag)[Go to Product page](#)**1** Image

Overview

Quantity:	50 µg
Target:	DGKE
Protein Characteristics:	AA 243-502
Origin:	Human
Source:	Escherichia coli (E. coli)
Biological Activity:	Active
Purification tag / Conjugate:	This DGKE protein is labelled with His tag.
Application:	Activity Assay (AcA), Cell Culture (CC)

Product Details

Characteristics:	Tag location: N-terminal His Tag
Purity:	> 95 %
Biological Activity Comment:	<p>DGKe (Diacylglycerol kinase epsilon) is an enzyme that mainly involved in the regeneration of phosphatidylinositol (PI) from diacylglycerol in the PI-cycle during cell signal transduction. PDHA1 (Pyruvate dehydrogenase E1 component subunit alpha) has been proven to be an interactor of DGKe through Affinity Capture-MS. Thus a binding ELISA assay was conducted to detect the interaction of recombinant human DGKe and recombinant human PDHA. Briefly, DGKe were diluted serially in PBS, with 0.01%BSA (pH 7.4). Duplicate samples of 100uL DGKe were then transferred to PDHA-coated microtiter wells and incubated for 2h at 37°C. Wells were washed with PBST and incubated for 1h with anti-DGKe pAb, then aspirated and washed 3 times. After incubation with HRP labelled secondary antibody, wells were aspirated and washed 3 times. With the addition of substrate solution, wells were incubated 15-25 minutes at 37°C.</p>

Product Details

Finally, add 50µL stop solution to the wells and read at 450nm immediately. The binding activity of DGKe and PDHA was shown in Figure 1, and this effect was in a dose dependent manner. The binding activity of DGKe with PDHA.

Target Details

Target:	DGKE
Alternative Name:	Diacylglycerol Kinase Epsilon (DGKe) (DGKE Products)
Background:	Alternative Names: DAGK5, DGK, Diglyceride kinase epsilon
Molecular Weight:	33kDa
UniProt:	P52429

Application Details

Application Notes:	Isoelectric Point: 7.7
Restrictions:	For Research Use only

Handling

Format:	Lyophilized
Buffer:	20 mM Tris, 150 mM NaCl, pH 8.0, containing 1 mM EDTA, 1 mM DTT, 0.01 % SKL, 5 % Trehalose and Proclin300.
Preservative:	Dithiothreitol (DTT), Other preservative, ProClin
Precaution of Use:	This product contains ProClin and Dithiothreitol (DTT): POISONOUS AND HAZARDOUS SUBSTANCES which should be handled by trained staff only.

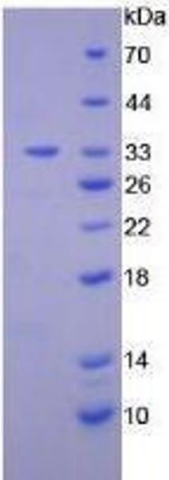


Image 1.