



Datasheet for ABIN6239917
REG3B Protein (AA 27-175) (His tag)



[Go to Product page](#)

2 Images

Overview

Quantity:	50 µg
Target:	REG3B
Protein Characteristics:	AA 27-175
Origin:	Mouse
Source:	Escherichia coli (E. coli)
Biological Activity:	Active
Purification tag / Conjugate:	This REG3B protein is labelled with His tag.
Application:	Activity Assay (AcA), Cell Culture (CC)

Product Details

Characteristics:	Tag location: N-terminal His Tag
Purity:	> 97 %
Biological Activity Comment:	Regenerating Islet Derived Protein 3 Beta (REG3b) also known as PAP-I and HIP is bactericidal C-type lectin which acts against several intestinal Gram-positive bacteria and Gram-negative bacteria. The Reg family proteins have been implicated in a range of physiological processes including acting as acute phase reactants, lectins, survival/growth factors for insulin-producing pancreatic beta-cells, neural cells, and epithelial cells of the digestive system. To test the effect of REG3b on cell proliferation of SK-N-SH, SK-N-SH cells were seeded into triplicate wells of 96-well plates at a density of 5,000 cells/well and allowed to attach overnight, then the medium was replaced with serum-free standard DMEM prior to the addition of various concentrations of REG3b. After incubated for 72h, cells were observed by inverted microscope and cell proliferation was measured by Cell Counting Kit-8 (CCK-8). Briefly, 10µL of CCK-8 solution was

Product Details

added to each well of the plate, then measure the absorbance at 450nm using a microplate reader after incubating the plate for 1-4 hours at 37°C .Cell proliferation of SK-N-SH cells after incubation with REG3b for 72h observed by inverted microscope was shown in Figure 1.

Target Details

Target:	REG3B
Alternative Name:	Regenerating Islet Derived Protein 3 Beta (REG3b) (REG3B Products)
Background:	Alternative Names: PAP1, Pancreatitis-Associated Protein 1
Molecular Weight:	17kDa
UniProt:	P35230

Application Details

Application Notes:	Isoelectric Point: 7.8
Restrictions:	For Research Use only

Handling

Format:	Lyophilized
Buffer:	20 mM Tris, 150 mM NaCl, pH 8.0, containing 1 mM EDTA, 1 mM DTT, 0.01 % SKL, 5 % Trehalose and Proclin300.
Preservative:	Dithiothreitol (DTT), Other preservative, ProClin
Precaution of Use:	This product contains ProClin and Dithiothreitol (DTT): POISONOUS AND HAZARDOUS SUBSTANCES which should be handled by trained staff only.

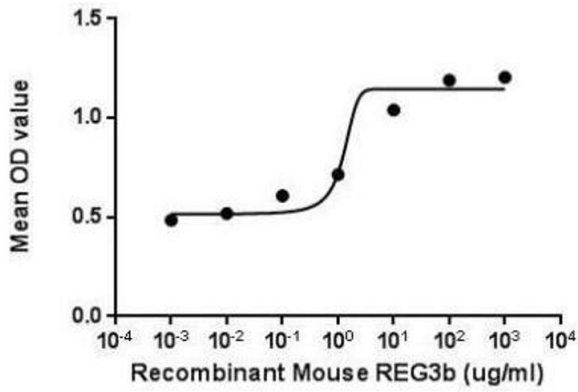


Image 1. The dose-effect curve of REG3b was shown in Figure 2. It was obvious that REG3b significantly promoted cell proliferation of SK-N-SH cells. The ED50 for this effect is typically 3.685-84.37ng/mL.

Figure 2. The dose-effect curve of REG3b on SK-N-SH cell.

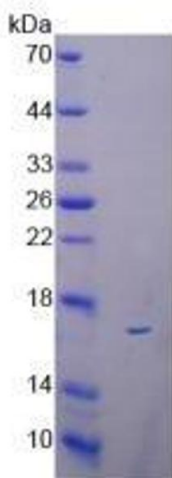


Image 2.