

Datasheet for ABIN6240816
anti-PD-1 antibody (FITC)[Go to Product page](#)

2 Images

Overview

Quantity:	100 tests
Target:	PD-1 (PDCD1)
Reactivity:	Human, Non-Human Primate
Host:	Mouse
Clonality:	Monoclonal
Conjugate:	This PD-1 antibody is conjugated to FITC
Application:	Flow Cytometry (FACS)

Product Details

Immunogen:	recombinant human CD279
Clone:	EH12-2H7
Isotype:	IgG1 kappa
Specificity:	The mouse monoclonal antibody EH12.2H7 recognizes an extracellular epitope of CD279 / PD-1 (programmed cell death 1), a 55 kDa type I transmembrane protein expressed above all during T cell development, on activated T cells, activated B cells, and activated monocytes.
Cross-Reactivity (Details):	Human, Non-Human Primates
Purification:	Purified antibody is conjugated with fluorescein isothiocyanate (FITC) under optimum conditions and unconjugated antibody and free fluorochrome are removed by size-exclusion chromatography.

Target Details

Target:	PD-1 (PDCD1)
Alternative Name:	CD279 / PD-1 (PDCD1 Products)
Background:	Programmed cell death 1,CD279 / PD-1 (programmed cell death 1), a transmembrane protein of CD28/CTLA-4 family. It is expressed inducibly mainly on activated T, B, and myeloid cells and plays a role in maintaining peripheral self-tolerance. Binding to its ligands CD273 and CD274 is associated with inhibition of T cell proliferation and induction of their anergy. It is also expressed during thymic development. Some variants of CD279 are associated with susceptibility to systemic lupus erythematosus, type 1 diabetes, and rheumatoid arthritis.,PDCD1, PD1, SLEB2
Gene ID:	5133
UniProt:	Q15116
Pathways:	Cancer Immune Checkpoints

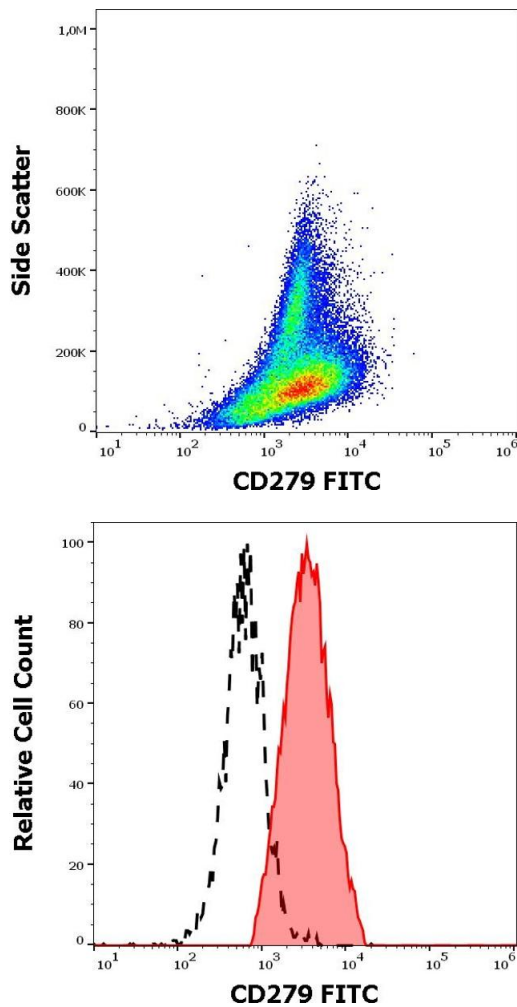
Application Details

Application Notes:	Flow cytometry: The reagent is designed for analysis of human blood cells using 4 µL reagent / 100 µL of whole blood or 10 ⁶ cells in a suspension. The content of a vial (0.4 ml) is sufficient for 100 tests.
Comment:	The purified antibody is conjugated with Fluorescein isothiocyanate (FITC) under optimum conditions. The reagent is free of unconjugated FITC and adjusted for direct use. No reconstitution is necessary.
Restrictions:	For Research Use only

Handling

Buffer:	Stabilizing phosphate buffered saline (PBS), pH 7.4, 15 mM sodium azide
Preservative:	Sodium azide
Precaution of Use:	This product contains Sodium azide: a POISONOUS AND HAZARDOUS SUBSTANCE which should be handled by trained staff only.
Handling Advice:	The purified antibody is conjugated with Fluorescein isothiocyanate (FITC) under optimum conditions. The reagent is free of unconjugated FITC and adjusted for direct use. No reconstitution is necessary.
Storage:	4 °C

Storage Comment: Store at 2-8°C. Protect from prolonged exposure to light. Do not freeze.



Flow Cytometry

Image 1. Flow cytometry surface staining pattern of human PHA stimulated peripheral blood mononuclear cells stained using anti-human CD279 (EH12.2H7) FITC antibody (4 µL reagent per milion cells in 100 µL of cell suspension).

Flow Cytometry

Image 2. Separation of human CD297 positive cells (red-filled) from cellular debris (black-dashed) in flow cytometry analysis (surface staining) of human PHA stimulated peripheral blood mononuclear cells stained using anti-human CD279 (EH12.2H7) FITC antibody (4 µL reagent per milion cells in 100 µL of cell suspension).