



[Go to Product page](#)

Datasheet for ABIN6240825

Mouse anti-Human IgD Antibody (APC)

3 Images

Overview

Quantity:	100 tests
Target:	IgD
Reactivity:	Human
Host:	Mouse
Clonality:	Monoclonal
Conjugate:	APC
Application:	Flow Cytometry (FACS)

Product Details

Immunogen:	Human IgD
Clone:	IA6-2
Isotype:	IgG2a kappa
Specificity:	The mouse monoclonal antibody IA6-2 recognizes human immunoglobulin D.
Cross-Reactivity (Details):	Human
Purification:	Purified antibody is conjugated with activated allophycocyanin (APC) under optimum conditions and unconjugated antibody and free fluorochrome are removed by size-exclusion chromatography.

Target Details

Target:	IgD
---------	-----

Target Details

Abstract: [IgD Products](#)

Target Type: Antibody

Background: Immunoglobulin D (IgD) is expressed on the surface of naive mature B cells, thus later than IgM, and is coexpressed with it then. Triggered by antigen binding, it signals through the CD79 complex to activate the B cells. Expression of IgD is lost after the isotype switch. Soluble IgD is present in very small amounts in the serum. IgD can bind to basophils and mast cells to activate them in an IgE-independent way to participate in respiratory immune defense.,Immunoglobulin D

Application Details

Application Notes: Flow cytometry: The reagent is designed for analysis of human blood cells using 10 µL reagent / 100 µL of whole blood or 10⁶ cells in a suspension. The content of a vial (1 ml) is sufficient for 100 tests.

Comment: The purified antibody is conjugated with cross-linked Allophycocyanin (APC) under optimum conditions. The conjugate is purified by size-exclusion chromatography and adjusted for direct use. No reconstitution is necessary.

Restrictions: For Research Use only

Handling

Buffer: Stabilizing phosphate buffered saline (PBS), pH 7.4, 15 mM sodium azide

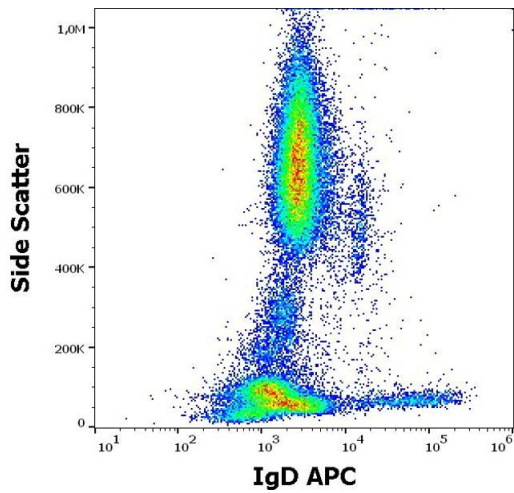
Preservative: Sodium azide

Precaution of Use: This product contains Sodium azide: a POISONOUS AND HAZARDOUS SUBSTANCE which should be handled by trained staff only.

Handling Advice: The purified antibody is conjugated with cross-linked Allophycocyanin (APC) under optimum conditions. The conjugate is purified by size-exclusion chromatography and adjusted for direct use. No reconstitution is necessary.

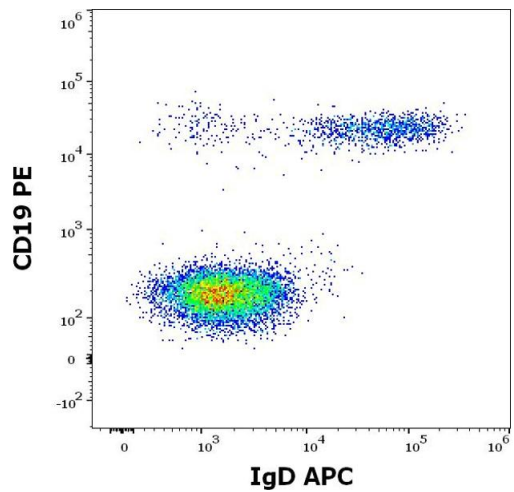
Storage: 4 °C

Storage Comment: Store at 2-8°C. Protect from prolonged exposure to light. Do not freeze.



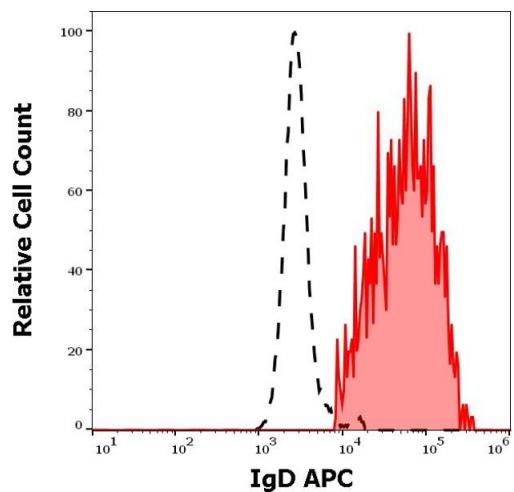
Flow Cytometry

Image 1. Flow cytometry surface staining pattern of human peripheral whole blood stained using anti-human IgD (IA6-2) APC antibody (10 μ L reagent / 100 μ L of peripheral whole blood).



Flow Cytometry

Image 2. Flow cytometry multicolor surface staining of human lymphocytes stained using anti-human IgD (IA6-2) APC antibody (10 μ L reagent / 100 μ L of peripheral whole blood) and anti-human CD19 (LT19) PE antibody (20 μ L reagent / 100 μ L of peripheral whole blood).



Flow Cytometry

Image 3. Separation of human IgD positive lymphocytes (red-filled) from neutrophil granulocytes (black-dashed) in flow cytometry analysis (surface staining) of human peripheral whole blood stained using anti-human IgD (IA6-2) APC antibody (10 μ L reagent / 100 μ L of peripheral whole blood).