

Datasheet for ABIN6240986
anti-IRF3 antibody (pSer385)[Go to Product page](#)

3 Images

Overview

Quantity:	100 µL
Target:	IRF3
Binding Specificity:	pSer385
Reactivity:	Human, Mouse, Rat
Host:	Rabbit
Clonality:	Polyclonal
Conjugate:	This IRF3 antibody is un-conjugated
Application:	Western Blotting (WB), Immunohistochemistry (IHC), Immunofluorescence (IF)

Product Details

Immunogen:	synthetic peptide
------------	-------------------

Target Details

Target:	IRF3
Alternative Name:	IRF-3 (IRF3 Products)
Background:	Key transcriptional regulator of type I interferon (IFN)-dependent immune responses which plays a critical role in the innate immune response against DNA and RNA viruses. Regulates the transcription of type I IFN genes (IFN-alpha and IFN-beta) and IFN-stimulated genes (ISG) by binding to an interferon-stimulated response element (ISRE) in their promoters. Acts as a more potent activator of the IFN-beta (IFNB) gene than the IFN-alpha (IFNA) gene and plays a critical role in both the early and late phases of the IFNA/B gene induction. Found in an inactive form in

Target Details

the cytoplasm of uninfected cells and following viral infection, double-stranded RNA (dsRNA), or toll-like receptor (TLR) signaling, is phosphorylated by IKBKE and TBK1 kinases. This induces a conformational change, leading to its dimerization and nuclear localization and association with CREB binding protein (CREBBP) to form dsRNA-activated factor 1 (DRAF1), a complex which activates the transcription of the type I IFN and ISG genes. Can activate distinct gene expression programs in macrophages and can induce significant apoptosis in primary macrophages.

UniProt: [Q14653](#)

Pathways: [TLR Signaling](#), [Activation of Innate immune Response](#), [Cellular Response to Molecule of Bacterial Origin](#), [Hepatitis C](#), [Toll-Like Receptors Cascades](#)

Application Details

Application Notes: IF: 1:100. WB: 1:1000. IHC: 1:50~100

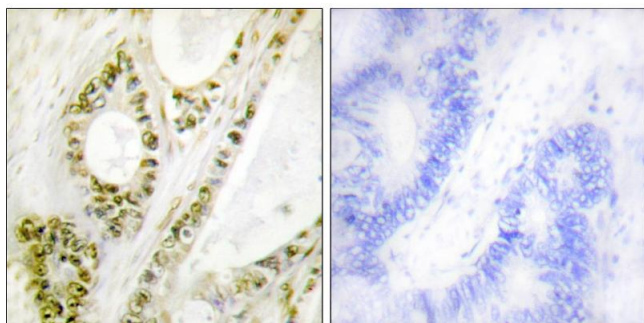
Restrictions: For Research Use only

Handling

Format: Liquid

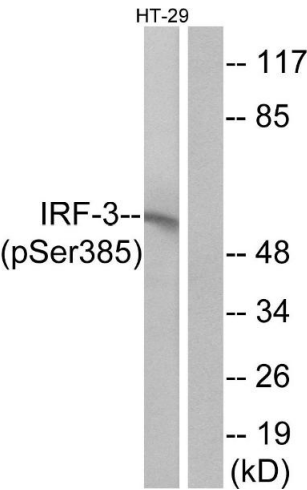
Storage: 4 °C, -20 °C

Images



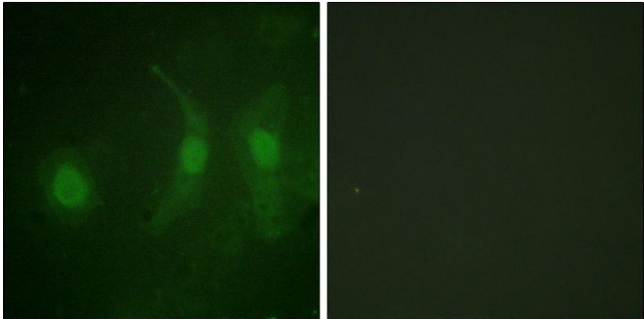
Immunohistochemistry

Image 1. Immunohistochemistry analysis of paraffin-embedded human colon carcinoma tissue using IRF-3 (Phospho-Ser385) antibody.



Western Blotting

Image 2. Western blot analysis of extracts from HT-29 cells, treated with insulin (0.01U/mL, 15 mins), using IRF-3 (Phospho-Ser385) antibody.



Immunofluorescence

Image 3. Immunofluorescence analysis of HeLa cells, using IRF-3 (Phospho-Ser385) antibody.