

Datasheet for ABIN6240989 **anti-SHP1 antibody (pTyr564)**



[Go to Product page](#)

1 Image

Overview

Quantity:	100 µL
Target:	SHP1 (PTPN6)
Binding Specificity:	pTyr564
Reactivity:	Human, Mouse
Host:	Rabbit
Clonality:	Polyclonal
Conjugate:	This SHP1 antibody is un-conjugated
Application:	Western Blotting (WB)

Product Details

Immunogen:	synthetic peptide
------------	-------------------

Target Details

Target:	SHP1 (PTPN6)
Alternative Name:	SHP-1 (PTPN6 Products)
Background:	Modulates signaling by tyrosine phosphorylated cell surface receptors such as KIT and the EGF receptor/EGFR. The SH2 regions may interact with other cellular components to modulate its own phosphatase activity against interacting substrates. Together with MTUS1, induces UBE2V2 expression upon angiotensin II stimulation. Plays a key role in hematopoiesis.
UniProt:	P29350
Pathways:	JAK-STAT Signaling , TCR Signaling , TLR Signaling , Nuclear Receptor Transcription Pathway ,

Target Details

Positive Regulation of Peptide Hormone Secretion, Steroid Hormone Mediated Signaling Pathway, Response to Growth Hormone Stimulus, Regulation of Leukocyte Mediated Immunity, CXCR4-mediated Signaling Events, Signaling Events mediated by VEGFR1 and VEGFR2, BCR Signaling

Application Details

Application Notes: WB: 1:1000

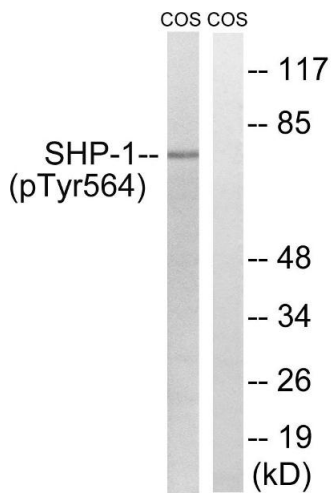
Restrictions: For Research Use only

Handling

Format: Liquid

Storage: 4 °C,-20 °C

Images



Western Blotting

Image 1. Western blot analysis of extracts from COS7 cells, treated with EGF (200 ng/mL, 30 mins), using SHP-1 (Phospho-Tyr564) antibody.