



Datasheet for ABIN6241010  
**anti-PRKAR2B antibody (pSer113)**



[Go to Product page](#)

1 Image

Overview

Quantity:	100 µL
Target:	PRKAR2B
Binding Specificity:	pSer113
Reactivity:	Human, Mouse
Host:	Rabbit
Clonality:	Polyclonal
Conjugate:	This PRKAR2B antibody is un-conjugated
Application:	Western Blotting (WB)

Product Details

Immunogen:	synthetic peptide
------------	-------------------

Target Details

Target:	PRKAR2B
Alternative Name:	PKA-R2beta ( <a href="#">PRKAR2B Products</a> )
Background:	Regulatory subunit of the cAMP-dependent protein kinases involved in cAMP signaling in cells. Type II regulatory chains mediate membrane association by binding to anchoring proteins, including the MAP2 kinase.
UniProt:	<a href="#">P31323</a>
Pathways:	<a href="#">Hedgehog Signaling</a> , <a href="#">EGFR Signaling Pathway</a> , <a href="#">Neurotrophin Signaling Pathway</a> , <a href="#">Myometrial Relaxation and Contraction</a> , <a href="#">M Phase</a> , <a href="#">G-protein mediated Events</a> , <a href="#">Interaction of EGFR with</a>

## Target Details

phospholipase C-gamma, SARS-CoV-2 Protein Interactome, The Global Phosphorylation Landscape of SARS-CoV-2 Infection

## Application Details

Application Notes: WB: 1:1000

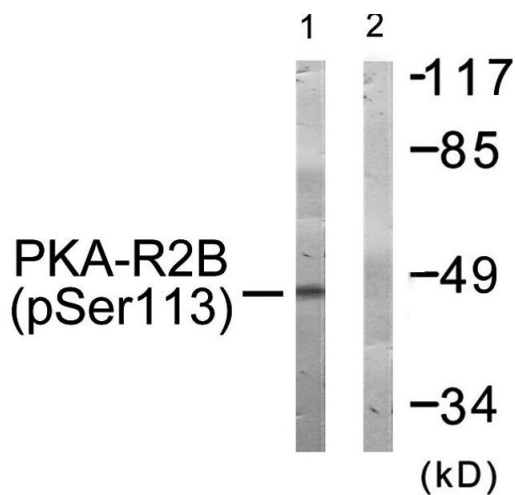
Restrictions: For Research Use only

## Handling

Format: Liquid

Storage: 4 °C, -20 °C

## Images



### Western Blotting

**Image 1.** Western blot analysis of extracts from COS-7 cells, treated with A (125 ng/mL, 30 mins), using PKA-R2β (Phospho-Ser113) antibody.