

Datasheet for ABIN6241039
anti-GRLF1 antibody (pTyr1105)[Go to Product page](#)

1 Image

Overview

Quantity:	400 µL
Target:	GRLF1
Binding Specificity:	AA 1090-1135, pTyr1105
Reactivity:	Human
Host:	Rabbit
Clonality:	Polyclonal
Conjugate:	This GRLF1 antibody is un-conjugated
Application:	Western Blotting (WB)

Product Details

Immunogen:	This antibody is generated from a rabbit immunized with a KLH conjugated synthetic peptide between 1090-1135 amino acids from human.
Clone:	RB46920
Isotype:	Ig Fraction
Predicted Reactivity:	M, Rat
Purification:	This antibody is purified through a protein A column, followed by peptide affinity purification.

Target Details

Target:	GRLF1
Alternative Name:	ARHGAP35 (GRLF1 Products)

Target Details

Background: Represses transcription of the glucocorticoid receptor by binding to the cis-acting regulatory sequence 5'- GAGAAAAGAAACTGGAGAACTC-3'. May participate in the regulation of retinal development and degeneration. May transduce signals from p21-ras to the nucleus, acting via the ras GTPase-activating protein (GAP). May also act as a tumor suppressor.

Molecular Weight: 170514

UniProt: [Q9NRY4](#)

Pathways: [Tube Formation](#)

Application Details

Application Notes: WB: 1:500

Restrictions: For Research Use only

Handling

Format: Liquid

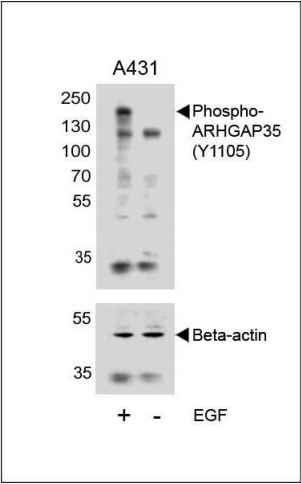
Buffer: Purified polyclonal antibody supplied in PBS with 0.09 % (W/V) sodium azide.

Preservative: Sodium azide

Precaution of Use: This product contains Sodium azide: a POISONOUS AND HAZARDOUS SUBSTANCE which should be handled by trained staff only.

Storage: 4 °C,-20 °C

Expiry Date: 6 months



Western Blotting

Image 1. Western blot analysis of lysates from A431 cell line, untreated or treated with EGF, 100 ng/mL, using Phospho-HUN-ARHG (ABIN6241039 and ABIN6578944) (upper) or Beta-actin (lower).