



[Go to Product page](#)

Datasheet for ABIN6241041
anti-PPP1R12A antibody (pSer668)

1 Image

Overview

Quantity:	200 µL
Target:	PPP1R12A
Binding Specificity:	AA 641-674, pSer668
Reactivity:	Human
Host:	Rabbit
Clonality:	Polyclonal
Conjugate:	This PPP1R12A antibody is un-conjugated
Application:	Western Blotting (WB)

Product Details

Immunogen:	This Phospho-MYPT1 (Ser668) antibody is generated from a rabbit immunized with a KLH conjugated synthetic peptide between 641-674 amino acids from human MYPT1.
Clone:	RB56874
Isotype:	Ig Fraction
Predicted Reactivity:	C, M, Rat
Purification:	This antibody is purified through a protein A column, followed by peptide affinity purification.

Target Details

Target:	PPP1R12A
Alternative Name:	MYPT1 (PPP1R12A Products)

Target Details

Background: Key regulator of protein phosphatase 1C (PPP1C). Mediates binding to myosin. As part of the PPP1C complex, involved in dephosphorylation of PLK1. Capable of inhibiting HIF1AN-dependent suppression of HIF1A activity.

Molecular Weight: 115281

UniProt: [O14974](#)

Pathways: [M Phase](#)

Application Details

Application Notes: WB: 1:1000

Restrictions: For Research Use only

Handling

Format: Liquid

Buffer: Purified polyclonal antibody supplied in PBS with 0.09 % (W/V) sodium azide.

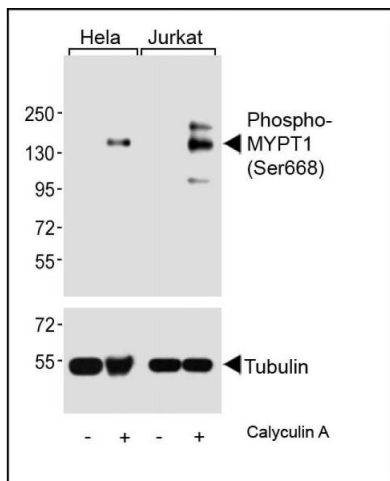
Preservative: Sodium azide

Precaution of Use: This product contains Sodium azide: a POISONOUS AND HAZARDOUS SUBSTANCE which should be handled by trained staff only.

Storage: 4 °C,-20 °C

Expiry Date: 6 months

Images



Western Blotting

Image 1. Western blot analysis of lysates from HeLa, Jurkat cell line, untreated or treated with Calyculin A, 100nM, using (ABIN6241041 and ABIN6578962) (upper) or Tubulin (lower).