

Datasheet for ABIN6241043
anti-PPP1R12A antibody (pThr852)[Go to Product page](#)

1 Image

Overview

Quantity:	200 µL
Target:	PPP1R12A
Binding Specificity:	AA 824-857, pThr852
Reactivity:	Mouse
Host:	Rabbit
Clonality:	Polyclonal
Conjugate:	This PPP1R12A antibody is un-conjugated
Application:	Western Blotting (WB)

Product Details

Immunogen:	This Phospho-MYPT1 (Thr852) antibody is generated from a rabbit immunized with a KLH conjugated synthetic peptide between 824-857 amino acids from the human MYPT1.
Clone:	RB56567
Isotype:	Ig Fraction
Predicted Reactivity:	C, Zf, Rat
Purification:	This antibody is purified through a protein A column, followed by peptide affinity purification.

Target Details

Target:	PPP1R12A
Alternative Name:	MYPT1 (PPP1R12A Products)

Target Details

Background:	Key regulator of protein phosphatase 1C (PPP1C). Mediates binding to myosin. As part of the PPP1C complex, involved in dephosphorylation of PLK1. Capable of inhibiting HIF1AN-dependent suppression of HIF1A activity.
Molecular Weight:	115281
UniProt:	O14974
Pathways:	M Phase

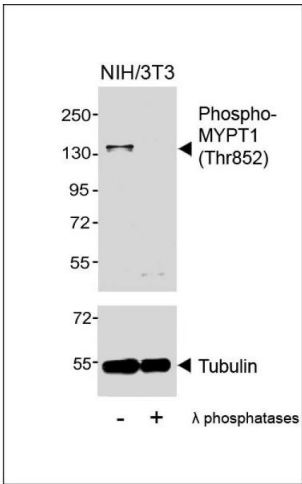
Application Details

Application Notes:	WB: 1:1000
Restrictions:	For Research Use only

Handling

Format:	Liquid
Buffer:	Purified polyclonal antibody supplied in PBS with 0.09 % (W/V) sodium azide.
Preservative:	Sodium azide
Precaution of Use:	This product contains Sodium azide: a POISONOUS AND HAZARDOUS SUBSTANCE which should be handled by trained staff only.
Storage:	4 °C,-20 °C
Expiry Date:	6 months

Images



Western Blotting

Image 1. Western blot analysis of lysates from NIH/3T3 cell line, untreated or treated with λ phosphatases, 30 min, using Phospho-MYPT1 (Thr852) Antibody (upper) or Tubulin (lower).