

Datasheet for ABIN6241046
anti-PPP1CA antibody (pThr320)



[Go to Product page](#)

1 Image

Overview

Quantity:	200 µL
Target:	PPP1CA
Binding Specificity:	AA 291-324, pThr320
Reactivity:	Human
Host:	Rabbit
Clonality:	Polyclonal
Conjugate:	This PPP1CA antibody is un-conjugated
Application:	Western Blotting (WB)

Product Details

Immunogen:	This Phospho-PPP1CA (Thr320) antibody is generated from a rabbit immunized with a KLH conjugated synthetic peptide between 291-324 amino acids from the human region of human PPP1CA.
Clone:	RB56571
Isotype:	Ig Fraction
Predicted Reactivity:	B, M, Rb, Rat
Purification:	This antibody is purified through a protein A column, followed by peptide affinity purification.

Target Details

Target:	PPP1CA
---------	--------

Target Details

Alternative Name:	PPP1CA (PPP1CA Products)
Background:	<p>Protein phosphatase that associates with over 200 regulatory proteins to form highly specific holoenzymes which dephosphorylate hundreds of biological targets. Protein phosphatase 1 (PP1) is essential for cell division, and participates in the regulation of glycogen metabolism, muscle contractility and protein synthesis. Involved in regulation of ionic conductances and long-term synaptic plasticity. May play an important role in dephosphorylating substrates such as the postsynaptic density-associated Ca(2+)/calmodulin dependent protein kinase II.</p> <p>Component of the PTW/PP1 phosphatase complex, which plays a role in the control of chromatin structure and cell cycle progression during the transition from mitosis into interphase. Regulates NEK2 function in terms of kinase activity and centrosome number and splitting, both in the presence and absence of radiation-induced DNA damage. Regulator of neural tube and optic fissure closure, and enteric neural crest cell (ENCCs) migration during development. In balance with CSNK1D and CSNK1E, determines the circadian period length, through the regulation of the speed and rhythmicity of PER1 and PER2 phosphorylation. May dephosphorylate CSNK1D and CSNK1E.</p>
Molecular Weight:	37512
UniProt:	P62136
Pathways:	M Phase , Cellular Glucan Metabolic Process , Regulation of Carbohydrate Metabolic Process , Lipid Metabolism

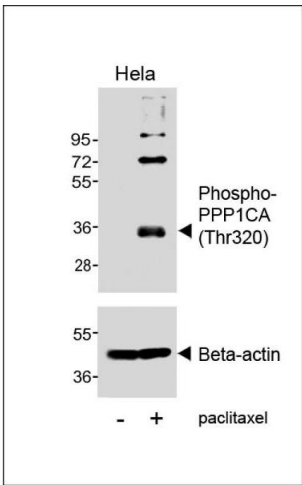
Application Details

Application Notes:	WB: 1:1000
Restrictions:	For Research Use only

Handling

Format:	Liquid
Buffer:	Purified polyclonal antibody supplied in PBS with 0.09 % (W/V) sodium azide.
Preservative:	Sodium azide
Precaution of Use:	This product contains Sodium azide: a POISONOUS AND HAZARDOUS SUBSTANCE which should be handled by trained staff only.
Storage:	4 °C,-20 °C

Expiry Date: 6 months



Western Blotting

Image 1. Western blot analysis of lysates from HeLa cell line, untreated or treated with paclitaxel, 100nM, 20hrs, using Phospho-P1CA (Thr320) Antibody (uer) or Beta-actin (lower).