

Datasheet for ABIN6241049
anti-PTEN antibody (pSer362)



[Go to Product page](#)

1 Image

Overview

| | |
|----------------------|-------------------------------------|
| Quantity: | 400 µL |
| Target: | PTEN |
| Binding Specificity: | pSer362 |
| Reactivity: | Human |
| Host: | Rabbit |
| Clonality: | Polyclonal |
| Conjugate: | This PTEN antibody is un-conjugated |
| Application: | Dot Blot (DB) |

Product Details

| | |
|-----------------------|--|
| Immunogen: | This PTEN Antibody is generated from rabbits immunized with a KLH conjugated synthetic phosphopeptide corresponding to amino acid residues surrounding S362 of human PTEN. |
| Clone: | RB39739 |
| Isotype: | Ig Fraction |
| Predicted Reactivity: | M |
| Purification: | This antibody is purified through a protein A column, followed by peptide affinity purification. |

Target Details

| | |
|-------------------|--|
| Target: | PTEN |
| Alternative Name: | PTEN (PTEN Products) |

Target Details

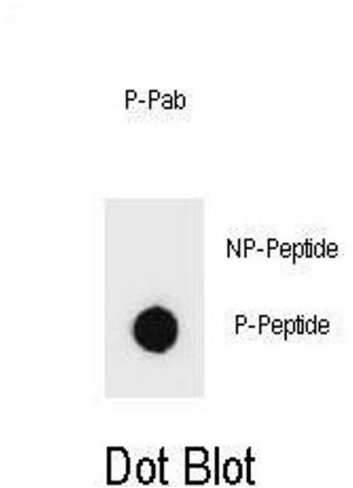
| | |
|-------------------|---|
| Background: | This gene was identified as a tumor suppressor that is mutated in a large number of cancers at high frequency. The protein encoded this gene is a phosphatidylinositol-3,4,5-trisphosphate 3-phosphatase. It contains a tensin like domain as well as a catalytic domain similar to that of the dual specificity protein tyrosine phosphatases. Unlike most of the protein tyrosine phosphatases, this protein preferentially dephosphorylates phosphoinositide substrates. It negatively regulates intracellular levels of phosphatidylinositol-3,4,5-trisphosphate in cells and functions as a tumor suppressor by negatively regulating AKT/PKB signaling pathway. |
| Molecular Weight: | 47166 |
| NCBI Accession: | NP_000305 |
| UniProt: | P60484 |
| Pathways: | TCR Signaling , Fc-epsilon Receptor Signaling Pathway , EGFR Signaling Pathway , Inositol Metabolic Process , Synaptic Membrane , Regulation of Cell Size , Autophagy , Platelet-derived growth Factor Receptor Signaling , Signaling of Hepatocyte Growth Factor Receptor , BCR Signaling |

Application Details

| | |
|--------------------|-----------------------|
| Application Notes: | DB: 1:500 |
| Restrictions: | For Research Use only |

Handling

| | |
|--------------------|--|
| Format: | Liquid |
| Buffer: | Purified polyclonal antibody supplied in PBS with 0.09 % (W/V) sodium azide. |
| Preservative: | Sodium azide |
| Precaution of Use: | This product contains Sodium azide: a POISONOUS AND HAZARDOUS SUBSTANCE which should be handled by trained staff only. |
| Storage: | 4 °C, -20 °C |
| Expiry Date: | 6 months |



Dot Blot

Image 1. Dot blot analysis of Phospho-PTEN- Antibody Phospho-specific Pab (ABIN6241049 and ABIN6578935) on nitrocellulose membrane. 50 ng of Phospho-peptide or Non Phospho-peptide per dot were adsorbed. Antibody working concentrations are 0.6 µg per ml.