

Datasheet for ABIN6241058  
**anti-SSH3 antibody (pSer37)**[Go to Product page](#)

## 1 Image

## Overview

Quantity:	200 µL
Target:	SSH3
Binding Specificity:	AA 10-43, pSer37
Reactivity:	Human
Host:	Rabbit
Clonality:	Polyclonal
Conjugate:	This SSH3 antibody is un-conjugated
Application:	Western Blotting (WB)

## Product Details

Immunogen:	This Phospho-SSH3 (Ser37) antibody is generated from a rabbit immunized with a KLH conjugated synthetic peptide between 10-43 amino acids from human SSH3.
Clone:	RB56878
Isotype:	Ig Fraction
Purification:	This antibody is purified through a protein A column, followed by peptide affinity purification.

## Target Details

Target:	SSH3
Alternative Name:	SSH3 ( <a href="#">SSH3 Products</a> )
Background:	Protein phosphatase which may play a role in the regulation of actin filament dynamics. Can

## Target Details

dephosphorylate and activate the actin binding/depolymerizing factor cofilin, which subsequently binds to actin filaments and stimulates their disassembly (By similarity).

Molecular Weight: 72996

UniProt: [Q8TE77](#)

## Application Details

Application Notes: WB: 1:500

Restrictions: For Research Use only

## Handling

Format: Liquid

Buffer: Purified polyclonal antibody supplied in PBS with 0.09 % (W/V) sodium azide.

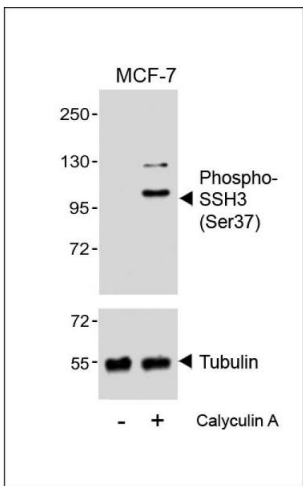
Preservative: Sodium azide

Precaution of Use: This product contains Sodium azide: a POISONOUS AND HAZARDOUS SUBSTANCE which should be handled by trained staff only.

Storage: 4 °C,-20 °C

Expiry Date: 6 months

## Images



### Western Blotting

**Image 1.** Western blot analysis of lysates from MCF-7 cell line, untreated or treated with Calyculin A, 100nM, using (ABIN6241058 and ABIN6578964) (upper) or Tubulin (lower).