

Datasheet for ABIN6241062
anti-EEF2K antibody (pSer366)[Go to Product page](#)

1 Image

Overview

Quantity:	200 µL
Target:	EEF2K
Binding Specificity:	AA 337-371, pSer366
Reactivity:	Human
Host:	Rabbit
Clonality:	Polyclonal
Conjugate:	This EEF2K antibody is un-conjugated
Application:	Western Blotting (WB)

Product Details

Immunogen:	This Phospho-eEF2k (Ser366) antibody is generated from a rabbit immunized with a KLH conjugated synthetic peptide between 337-371 amino acids from the human region of human EEF2k.
Clone:	RB56631
Isotype:	Ig Fraction
Purification:	This antibody is purified through a protein A column, followed by peptide affinity purification.

Target Details

Target:	EEF2K
Alternative Name:	eEF2k (EEF2K Products)

Target Details

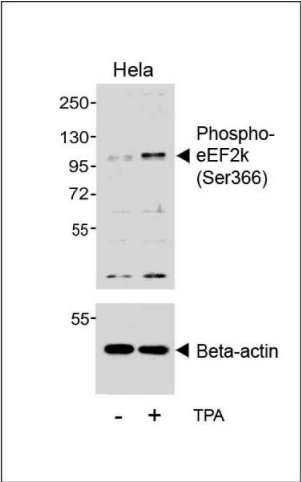
Background:	Threonine kinase that regulates protein synthesis by controlling the rate of peptide chain elongation. Upon activation by a variety of upstream kinases including AMPK or TRPM7, phosphorylates the elongation factor EEF2 at a single site, renders it unable to bind ribosomes and thus inactive. In turn, the rate of protein synthesis is reduced.
Molecular Weight:	82144
UniProt:	O00418
Pathways:	AMPK Signaling

Application Details

Application Notes:	WB: 1:500
Restrictions:	For Research Use only

Handling

Format:	Liquid
Buffer:	Purified polyclonal antibody supplied in PBS with 0.09 % (W/V) sodium azide.
Preservative:	Sodium azide
Precaution of Use:	This product contains Sodium azide: a POISONOUS AND HAZARDOUS SUBSTANCE which should be handled by trained staff only.
Storage:	4 °C,-20 °C
Expiry Date:	6 months



Western Blotting

Image 1. Western blot analysis of lysates from HeLa cell line, untreated or treated with T, 200nM, using (ABIN6241062 and ABIN6578958) (upper) or Beta-actin (lower).