

Datasheet for ABIN6241067
anti-ABL1 antibody (pTyr251)



[Go to Product page](#)

4 Images

1 Publication

Overview

Quantity:	400 µL
Target:	ABL1
Binding Specificity:	pTyr251
Reactivity:	Human
Host:	Rabbit
Clonality:	Polyclonal
Conjugate:	This ABL1 antibody is un-conjugated
Application:	Western Blotting (WB), Immunofluorescence (IF), Immunohistochemistry (Paraffin-embedded Sections) (IHC (p)), Dot Blot (DB)

Product Details

Immunogen:	This ABL1 Antibody is generated from rabbits immunized with a KLH conjugated synthetic phosphopeptide corresponding to amino acid residues surrounding Y251 of human ABL1.
Clone:	RB7351
Isotype:	Ig Fraction
Purification:	This antibody is purified through a protein A column, followed by peptide affinity purification.

Target Details

Target:	ABL1
Alternative Name:	ABL1 (ABL1 Products)

Target Details

Background:	ABL1 is a cytoplasmic and nuclear protein tyrosine kinase that has been implicated in processes of cell differentiation, cell division, cell adhesion, and stress response. Activity of c-Abl protein is negatively regulated by its SH3 domain, and deletion of the SH3 domain turns ABL1 into an oncogene. The t(9,22) translocation results in the head-to-tail fusion of the BCR and ABL1 genes present in many cases of chronic myelogenous leukemia. The DNA-binding activity of the ubiquitously expressed ABL1 tyrosine kinase is regulated by CDC2-mediated phosphorylation, suggesting a cell cycle function for ABL1.
Molecular Weight:	122873
NCBI Accession:	NP_005148 , NP_009297
UniProt:	P00519
Pathways:	Apoptosis , Regulation of Muscle Cell Differentiation , Platelet-derived growth Factor Receptor Signaling , Lipid Metabolism

Application Details

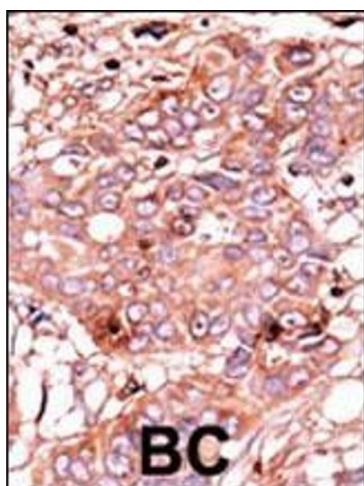
Application Notes:	IF: 1:10~50. WB: 1:1000. IHC-P: 1:50~100. DB: 1:500
Restrictions:	For Research Use only

Handling

Format:	Liquid
Buffer:	Purified polyclonal antibody supplied in PBS with 0.09 % (W/V) sodium azide.
Preservative:	Sodium azide
Precaution of Use:	This product contains Sodium azide: a POISONOUS AND HAZARDOUS SUBSTANCE which should be handled by trained staff only.
Storage:	4 °C,-20 °C
Expiry Date:	6 months

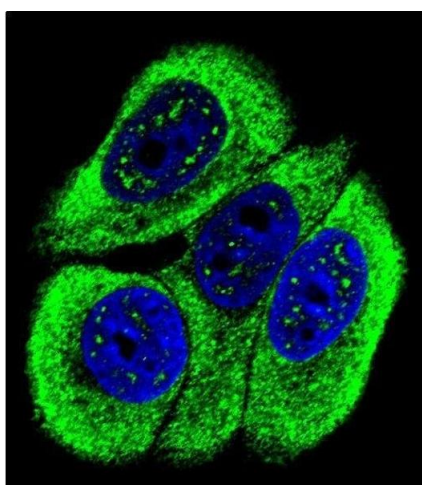
Publications

Product cited in:	Asmussen, Lasater, Tajon, Oses-Prieto, Jun, Taylor, Burlingame, Craik, Shah: "MEK-dependent negative feedback underlies BCR-ABL-mediated oncogene addiction." in: Cancer discovery , Vol. 4, Issue 2, pp. 200-15, (2014) (PubMed).
-------------------	---



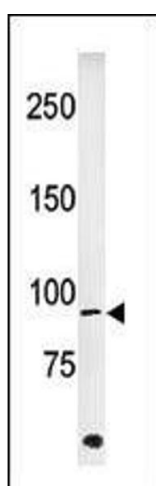
Immunohistochemistry (Paraffin-embedded Sections)

Image 1. Formalin-fixed and paraffin-embedded human cancer tissue reacted with the primary antibody, which was peroxidase-conjugated to the secondary antibody, followed by AEC staining. This data demonstrates the use of this antibody for immunohistochemistry, clinical relevance has not been evaluated. BC = breast carcinoma, HC = hepatocarcinoma.



Immunofluorescence

Image 2. Confocal immunofluorescent analysis of Phospho-ABL1- Antibody (ABIN6241067 and ABIN6578924) with MCF-7 cell followed by Alexa Fluor 488-conjugated goat anti-rabbit IgG (green). DAPI was used to stain the cell nuclear (blue).



Western Blotting

Image 3. Western blot analysis of anti-ABL Pab (ABIN6241067 and ABIN6578924) in Hela cell line lysate (35 µg/lane). ABL (arrow) was detected using the purified Pab.

Please check the [product details page](#) for more images. Overall 4 images are available for ABIN6241067.