



[Go to Product page](#)

Datasheet for ABIN6241169

anti-Apolipoprotein L 2 antibody

1 Image

Overview

Quantity:	100 µL
Target:	Apolipoprotein L 2 (APOL2)
Reactivity:	Human, Rat, Mouse
Host:	Rabbit
Clonality:	Polyclonal
Conjugate:	This Apolipoprotein L 2 antibody is un-conjugated
Application:	Western Blotting (WB)

Product Details

Immunogen: synthetic peptide

Target Details

Target:	Apolipoprotein L 2 (APOL2)
Alternative Name:	Apolipoprotein L2 (APOL2 Products)
Background:	May affect the movement of lipids in the cytoplasm or allow the binding of lipids to organelles.
UniProt:	Q9BQE5
Pathways:	The Global Phosphorylation Landscape of SARS-CoV-2 Infection

Application Details

Application Notes: WB: 1:1000

Application Details

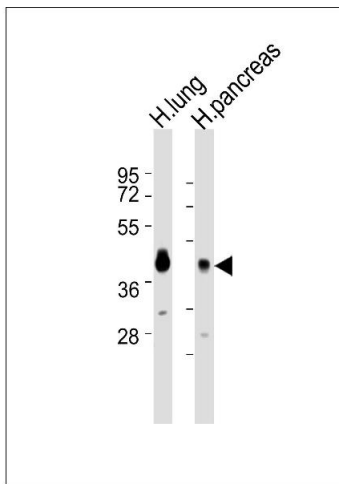
Restrictions: For Research Use only

Handling

Format: Liquid

Storage: 4 °C,-20 °C

Images



Western Blotting

Image 1. All lanes : Anti-Apolipoprotein L2 Antibody at 1:1000 dilution Lane 1: H.lung tissue lysates Lane 2: H.pancreas tissue lysates Lysates/proteins at 20 µg per lane. Secondary Goat Anti-Rabbit IgG, (H+L), Peroxidase conjugated at 1/10000 dilution Predicted band size : 37 kDa Blocking/Dilution buffer: 5 % NFDm/TBST.