

Datasheet for ABIN6241239

anti-CRTC1 antibody[Go to Product page](#)

4 Images

Overview

Quantity:	100 µL
Target:	CRTC1
Reactivity:	Human
Host:	Mouse
Clonality:	Monoclonal
Conjugate:	This CRTC1 antibody is un-conjugated
Application:	Western Blotting (WB), Flow Cytometry (FACS), Immunoprecipitation (IP), Immunocytochemistry (ICC)

Product Details

Immunogen:	Recombinant Protein
------------	---------------------

Target Details

Target:	CRTC1
Alternative Name:	MECT1 / Torc1 (CRTC1 Products)
Background:	Transcriptional coactivator for CREB1 which activates transcription through both consensus and variant cAMP response element (CRE) sites. Acts as a coactivator, in the SIK/TORC signaling pathway, being active when dephosphorylated and acts independently of CREB1 'Ser-133' phosphorylation. Enhances the interaction of CREB1 with TAF4. Regulates the expression of specific CREB-activated genes such as the steroidogenic gene, StAR. Potent coactivator of PGC1alpha and inducer of mitochondrial biogenesis in muscle cells. Also coactivator for TAX activation of the human T-cell leukemia virus type 1 (HTLV-1) long terminal repeats (LTR). In the

Target Details

hippocampus, involved in late-phase long- term potentiation (L-LTP) maintenance at the Schaffer collateral- CA1 synapses. May be required for dendritic growth of developing cortical neurons (By similarity). In concert with SIK1, regulates the light-induced entrainment of the circadian clock. In response to light stimulus, coactivates the CREB-mediated transcription of PER1 which plays an important role in the photic entrainment of the circadian clock.

UniProt: [Q6UUV9](#)

Application Details

Application Notes: IP: 1:500. WB: 1:1000. FC: 1:100. ICC: 1:300

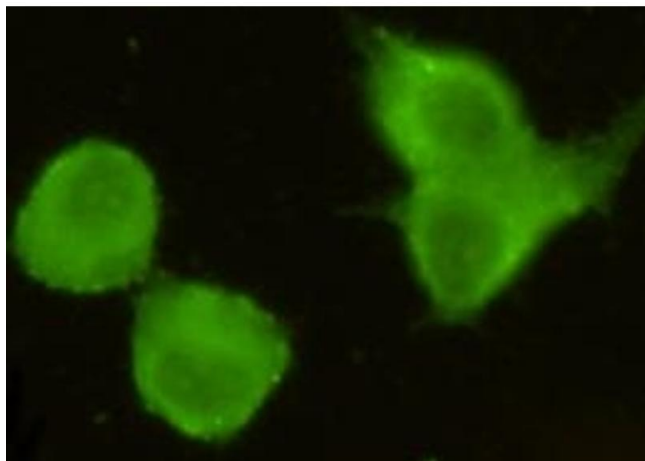
Restrictions: For Research Use only

Handling

Format: Liquid

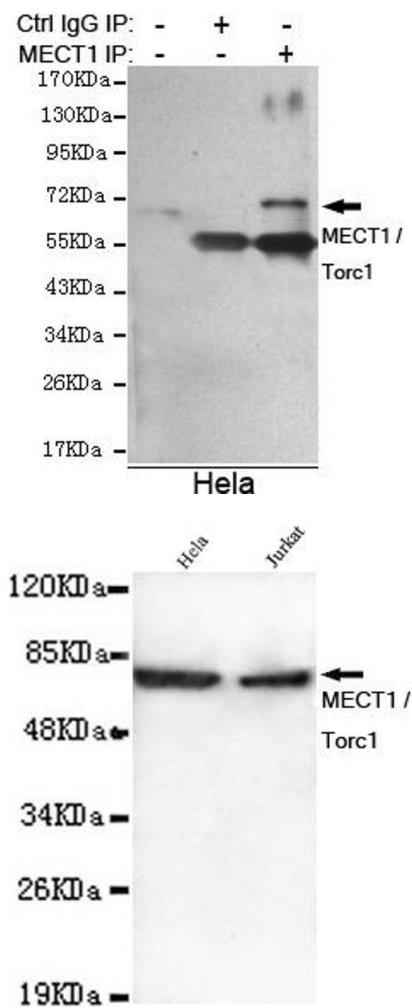
Storage: 4 °C,-20 °C

Images



Immunocytochemistry

Image 1. Immunocytochemistry stain of HeLa using MECT1 / Torc1 mouse mAb (1:300).



Immunoprecipitation

Image 2. Immunoprecipitation analysis of HeLa cell lysate using MECT1 / Torc1 mouse mAb.

Western Blotting

Image 3. Western blot detection of MECT1 / Torc1 in HeLa and Jurkat lysates using MECT1 / Torc1 mouse mAb (1:1000 diluted). Predicted band size: 78KDa. Observed band size: 78KDa.

Please check the [product details page](#) for more images. Overall 4 images are available for ABIN6241239.