



Datasheet for ABIN6241322  
**anti-HTRA2 antibody**



[Go to Product page](#)

2 Images

Overview

Quantity:	100 µL
Target:	HTRA2
Reactivity:	Human
Host:	Mouse
Clonality:	Monoclonal
Conjugate:	This HTRA2 antibody is un-conjugated
Application:	Western Blotting (WB), Immunoprecipitation (IP)

Product Details

Clone: 8G11-4B8-4F10-G5

Target Details

Target:	HTRA2
Alternative Name:	HTRA2 ( <a href="#">HTRA2 Products</a> )
Background:	Serine protease that shows proteolytic activity against a non-specific substrate beta-casein. Promotes or induces cell death either by direct binding to and inhibition of BIRC proteins (also called inhibitor of apoptosis proteins, IAPs), leading to an inc
UniProt:	<a href="#">O43464</a>
Pathways:	<a href="#">Positive Regulation of Endopeptidase Activity</a>

## Application Details

Application Notes: IP: WB: 1:500

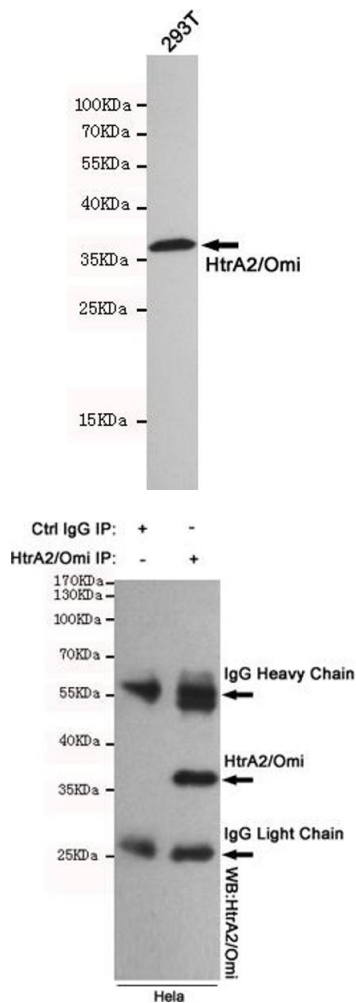
Restrictions: For Research Use only

## Handling

Format: Liquid

Storage: 4 °C, -20 °C

## Images



### Western Blotting

**Image 1.** Western blot detection of HtrA2/Omi in 293T cell lysates using HtrA2/Omi mouse mAb(dilution 1:500). Predicted band size:49 kDa.Observed band size:36 kDa.

### Immunoprecipitation

**Image 2.** Immunoprecipitation analysis of HeLa cell lysates using HtrA2/Omi mouse mAb.