

Datasheet for ABIN6241377
anti-PKC alpha antibody[Go to Product page](#)

1 Image

Overview

Quantity:	100 µL
Target:	PKC alpha (PKCa)
Reactivity:	Rat, Monkey
Host:	Mouse
Clonality:	Monoclonal
Conjugate:	This PKC alpha antibody is un-conjugated
Application:	Western Blotting (WB)

Product Details

Clone:	3G11-G11-G11
--------	--------------

Target Details

Target:	PKC alpha (PKCa)
Alternative Name:	PKCa (PKCa Products)
Background:	<p>This is a calcium-activated, phospholipid-dependent, serine- and threonine-specific enzyme. May play a role in cell motility by phosphorylating CSPG4. PKC is activated by diacylglycerol which in turn phosphorylates a range of cellular proteins. PKC also serves as the receptor for phorbol esters, a class of tumor promoters.</p>
UniProt:	P17252
Pathways:	WNT Signaling , TCR Signaling , EGFR Signaling Pathway , Neurotrophin Signaling Pathway , Thyroid Hormone Synthesis , cAMP Metabolic Process , Myometrial Relaxation and Contraction ,

Target Details

Cell-Cell Junction Organization, Regulation of G-Protein Coupled Receptor Protein Signaling, G-protein mediated Events, Signaling Events mediated by VEGFR1 and VEGFR2, Interaction of EGFR with phospholipase C-gamma, Thromboxane A2 Receptor Signaling, VEGFR1 Specific Signals, VEGF Signaling

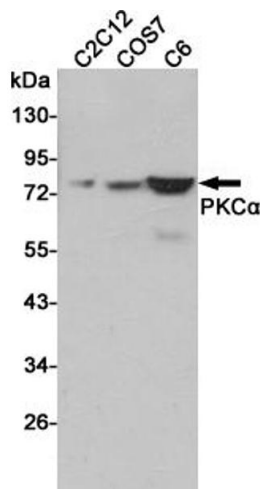
Application Details

Application Notes:	WB: 1:1000
Restrictions:	For Research Use only

Handling

Format:	Liquid
Storage:	4 °C,-20 °C

Images



Western Blotting

Image 1. Western blot detection of PKCα in C2C12,COS7 and C6 cell lysates using PKCα Mouse mAb (1:1000 diluted). Predicted band size: 77KDa. Observed band size:80KDa.