

Datasheet for ABIN6241447

## anti-HIC2 antibody

### 1 Image



[Go to Product page](#)

### Overview

Quantity:	100 µL
Target:	HIC2
Reactivity:	Human, Mouse, Rat
Host:	Rabbit
Clonality:	Polyclonal
Conjugate:	This HIC2 antibody is un-conjugated
Application:	Western Blotting (WB)

### Product Details

Immunogen: synthetic peptide

### Target Details

Target:	HIC2
Alternative Name:	HIC2 ( <a href="#">HIC2 Products</a> )
Background:	C1r B chain is a serine protease that combines with C1q and C1s to form C1, the first component of the classical pathway of the complement system.
UniProt:	<a href="#">P00736</a>

### Application Details

Application Notes: WB: 1:1000

## Application Details

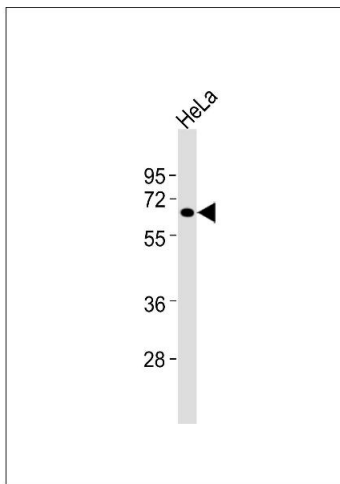
Restrictions: For Research Use only

## Handling

Format: Liquid

Storage: 4 °C, -20 °C

## Images



### Western Blotting

**Image 1.** Anti-HIC2 Antibody at 1:1000 dilution + HeLa whole cell lysates Lysates/proteins at 20 µg per lane. Secondary Goat Anti-Rabbit IgG, (H+L), Peroxidase conjugated at 1/10000 dilution Predicted band size : 66 kDa Blocking/Dilution buffer: 5 % NFDm/TBST.