



Datasheet for ABIN6241501 anti-MMP2 antibody



[Go to Product page](#)

3 Images

Overview

Quantity:	100 µL
Target:	MMP2
Reactivity:	Human, Rat
Host:	Mouse
Clonality:	Monoclonal
Application:	Western Blotting (WB), Immunofluorescence (IF)

Product Details

Clone: 3A8-C1-E8

Target Details

Target:	MMP2
Alternative Name:	MMP-2 (MMP2 Products)
Background:	Ubiquitous metalloproteinase that is involved in diverse functions such as remodeling of the vasculature, angiogenesis, tissue repair, tumor invasion, inflammation, and atherosclerotic plaque rupture. As well as degrading extracellular matrix proteins,
UniProt:	P08253
Pathways:	Activation of Innate immune Response

Application Details

Application Notes: WB: 1:1000. WB: 1:1000. ICC:

Application Details

Restrictions: For Research Use only

Handling

Format: Liquid

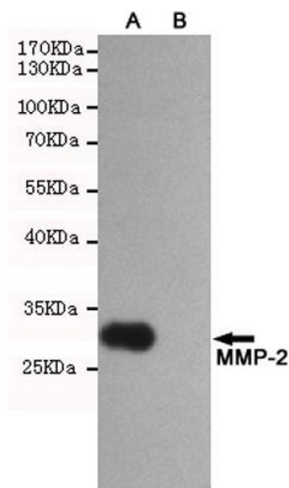
Storage: 4 °C,-20 °C

Images



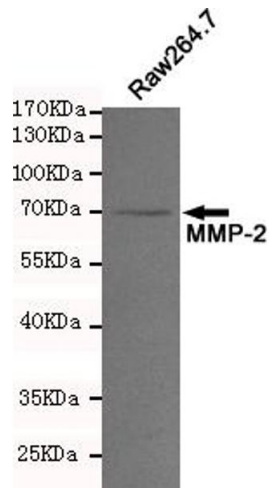
Immunocytochemistry

Image 1. Immunofluorescent analysis of HeLa cells fixed by anhydrous methanol at -20 °C and using P-2 mouse mAb (dilution 1:50). DAPI was used to stain nucleus (blue).



Western Blotting

Image 2. Western blot analysis of extracts from CHO-K1 (B) and CHO-K1 transfected by P-2 fragment (A) cell lysates using P-2 mouse mAb (1:2000 diluted). Predicted band size: 30kDa. Observed band size: 30kDa.



Western Blotting

Image 3. Western blot analysis of extracts from Raw264.7 cell lysates using P-2 mouse mAb (1:200 diluted). Predicted band size:64,72kDa. Observed band size:72kDa.