



[Go to Product page](#)

Datasheet for ABIN6241503  
**anti-PKM2 antibody**

2 Images

Overview

Quantity:	100 µL
Target:	PKM2
Reactivity:	Human, Mouse, Rat, Monkey
Host:	Mouse
Clonality:	Monoclonal
Conjugate:	This PKM2 antibody is un-conjugated
Application:	Western Blotting (WB), Immunofluorescence (IF)

Product Details

Clone: 1A7-G6-H6

Target Details

Target:	PKM2
Alternative Name:	PKM2 ( <a href="#">PKM2 Products</a> )
Background:	Glycolytic enzyme that catalyzes the transfer of a phosphoryl group from phosphoenolpyruvate (PEP) to ADP, generating ATP. Stimulates POU5F1-mediated transcriptional activation. Plays a general role in caspase independent cell death of tumor cells. The ra
UniProt:	<a href="#">P14618</a>
Pathways:	<a href="#">Warburg Effect</a>

## Application Details

Application Notes: WB: 1:1000. ICC: 1:400

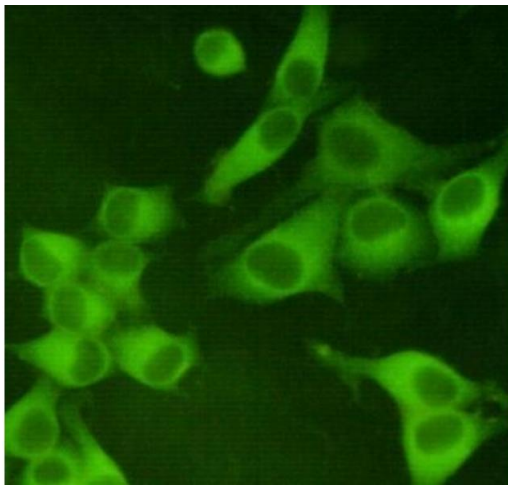
Restrictions: For Research Use only

## Handling

Format: Liquid

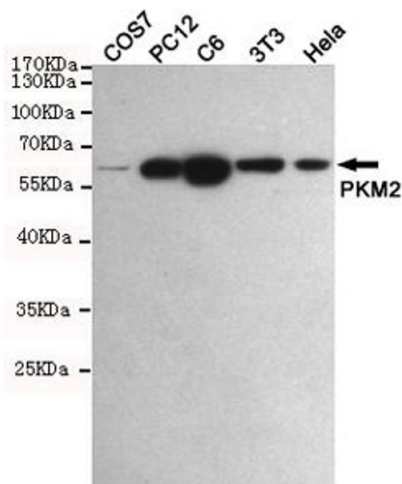
Storage: 4 °C,-20 °C

## Images



### Immunocytochemistry

**Image 1.** Immunocytochemistry staining of HeLa cells fixed with 4 % Paraformaldehyde and using anti-PKM2 mouse mAb (dilution 1:400).



### Western Blotting

**Image 2.** Western blot detection of PKM2 in COS7,PC12,C6,3T3 and HeLa cell lysates using PKM2 mouse mAb (1:1000 diluted).Predicted band size:60KDa.Observed band size:60KDa.