



[Go to Product page](#)

Datasheet for ABIN6241512  
**anti-ACLY antibody (C-Term)**

3 Images

### Overview

Quantity:	100 µL
Target:	ACLY
Binding Specificity:	C-Term
Reactivity:	Human, Mouse
Host:	Mouse
Clonality:	Monoclonal
Conjugate:	This ACLY antibody is un-conjugated
Application:	Western Blotting (WB), Flow Cytometry (FACS), Immunocytochemistry (ICC)

### Product Details

Immunogen:	Recombinant Protein
------------	---------------------

### Target Details

Target:	ACLY
Alternative Name:	ATP-Citrate Lyase ( <a href="#">ACLY Products</a> )
Background:	ATP citrate-lyase is the primary enzyme responsible for the synthesis of cytosolic acetyl-CoA in many tissues. Has a central role in de novo lipid synthesis. In nervous tissue it may be involved in the biosynthesis of acetylcholine.
UniProt:	<a href="#">P53396</a>
Pathways:	<a href="#">Warburg Effect</a>

## Application Details

Application Notes: WB: 1:1000. FC: 1:100. ICC: 1:150

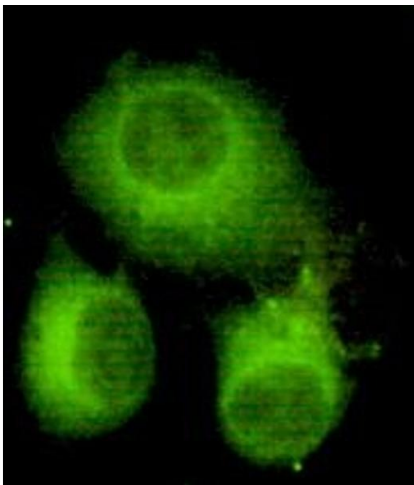
Restrictions: For Research Use only

## Handling

Format: Liquid

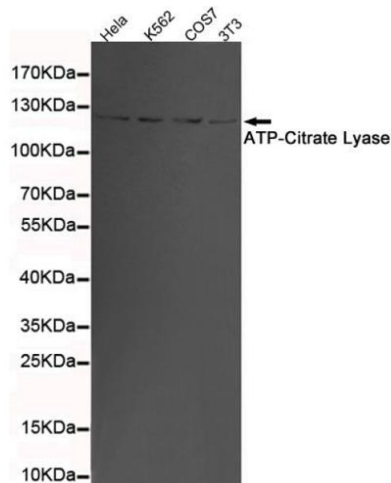
Storage: 4 °C,-20 °C

## Images



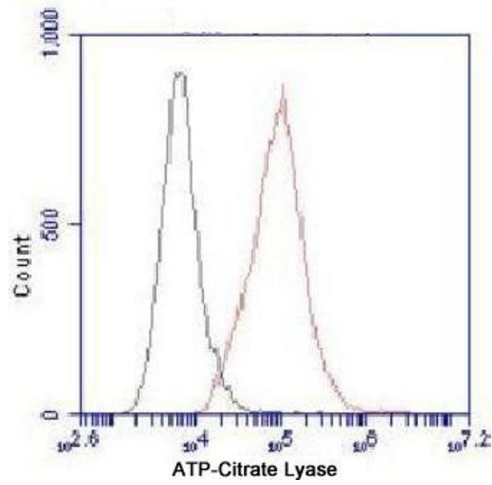
### Immunocytochemistry

**Image 1.** Immunocytochemistry of HeLa cells using anti-ATP-Citrate Lyase (C-terminus) mouse mAb diluted 1:150.



### Western Blotting

**Image 2.** Western blot detection of ATP-Citrate Lyase in 3T3, K562, COS7 and HeLa cell lysates using ATP-Citrate Lyase mouse mAb (1:1000 diluted). Predicted band size: 120 kDa. Observed band size: 120 kDa.



### Flow Cytometry

**Image 3.** Flow Cytometry analysis of HeLa cells stained with ATP-Citrate Lyase (red, 1/100 dilution), followed by FITC-conjugated goat anti-mouse IgG. Black line histogram represents the isotype control, normal mouse IgG