



[Go to Product page](#)

Datasheet for ABIN6241557

## anti-NXPH2 antibody

### 1 Image

#### Overview

Quantity:	100 µL
Target:	NXPH2
Reactivity:	Human, Mouse, Rat
Host:	Rabbit
Clonality:	Polyclonal
Conjugate:	This NXPH2 antibody is un-conjugated
Application:	Western Blotting (WB)

#### Product Details

Immunogen: synthetic peptide

#### Target Details

Target:	NXPH2
Alternative Name:	NXPH2 ( <a href="#">NXPH2 Products</a> )
Background:	May be signaling molecules that resemble neuropeptides and that act by binding to alpha-neurexins and possibly other receptors (Potential).
UniProt:	<a href="#">O95156</a>

#### Application Details

Application Notes: WB: 1:500

## Application Details

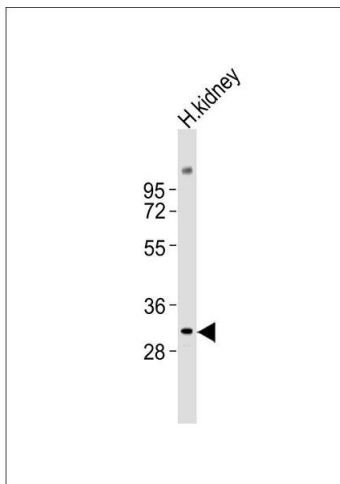
Restrictions: For Research Use only

## Handling

Format: Liquid

Storage: 4 °C, -20 °C

## Images



### Western Blotting

**Image 1.** Anti-NXPH2 Antibody at 1:500 dilution + human kidney lysates Lysates/proteins at 20 µg per lane. Secondary Goat Anti-Rabbit IgG, (H+L), Peroxidase conjugated at 1/10000 dilution Predicted band size : 30 kDa Blocking/Dilution buffer: 5 % NFDN/TBST.