



[Go to Product page](#)

Datasheet for ABIN6241621

## anti-CPT1C antibody (Cleaved-Thr288)

### 1 Image

#### Overview

Quantity:	100 µL
Target:	CPT1C
Binding Specificity:	Cleaved-Thr288
Reactivity:	Human
Host:	Rabbit
Clonality:	Polyclonal
Conjugate:	This CPT1C antibody is un-conjugated
Application:	Western Blotting (WB)

#### Product Details

Immunogen: Synthetic Peptide

#### Target Details

Target:	CPT1C
Alternative Name:	CATL1 ( <a href="#">CPT1C Products</a> )
Background:	Important for the overall degradation of proteins in lysosomes.
UniProt:	<a href="#">P07711</a>
Pathways:	<a href="#">AMPK Signaling, Monocarboxylic Acid Catabolic Process</a>

## Application Details

Application Notes: WB: 1:1000

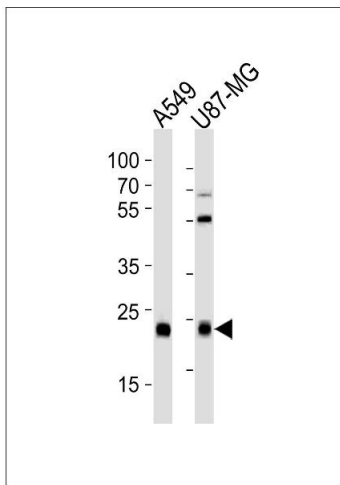
Restrictions: For Research Use only

## Handling

Format: Liquid

Storage: 4 °C,-20 °C

## Images



### Western Blotting

**Image 1.** Western blot analysis of lysates from A549,U-87 MG cell line (from left to right),using CATL1 Antibody (heavy chain, Cleaved-Thr288)(ABIN6241621). ABIN6241621 was diluted at 1:1000 at each lane. A goat anti-rabbit IgG H&L(HRP) at 1:5000 dilution was used as the secondary antibody.Lysates at 35 µg per lane.