



Datasheet for ABIN6241657 anti-FEN1 antibody



[Go to Product page](#)

2 Images

Overview

Quantity:	100 µL
Target:	FEN1
Reactivity:	Human, Mouse
Host:	Mouse
Clonality:	Monoclonal
Conjugate:	This FEN1 antibody is un-conjugated
Application:	Western Blotting (WB), Immunocytochemistry (ICC)

Product Details

Immunogen: Recombinant Protein

Target Details

Target:	FEN1
Alternative Name:	FEN-1 (FEN1 Products)
Background:	Structure-specific nuclease with 5'-flap endonuclease and 5'-3' exonuclease activities involved in DNA replication and repair. During DNA replication, cleaves the 5'-overhanging flap structure that is generated by displacement synthesis when DNA polymerase encounters the 5'-end of a downstream Okazaki fragment. It enters the flap from the 5'-end and then tracks to cleave the flap base, leaving a nick for ligation. Also involved in the long patch base excision repair (LP-BER) pathway, by cleaving within the apurinic/apyrimidinic (AP) site-terminated flap. Acts as a genome stabilization factor that prevents flaps from equilibrating into structures that lead to duplications and deletions. Also possesses 5'-3' exonuclease activity on nicked or gapped

Target Details

double- stranded DNA, and exhibits RNase H activity. Also involved in replication and repair of rDNA and in repairing mitochondrial DNA.

UniProt: [P39748](#)

Pathways: [Telomere Maintenance](#), [DNA Damage Repair](#), [DNA Replication](#), [Synthesis of DNA](#)

Application Details

Application Notes: WB: 1:1000. ICC: 1:400

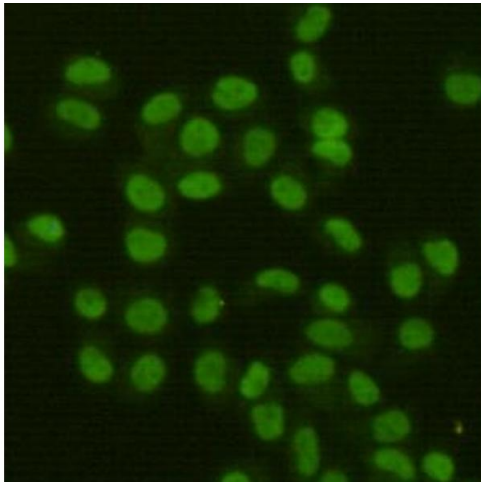
Restrictions: For Research Use only

Handling

Format: Liquid

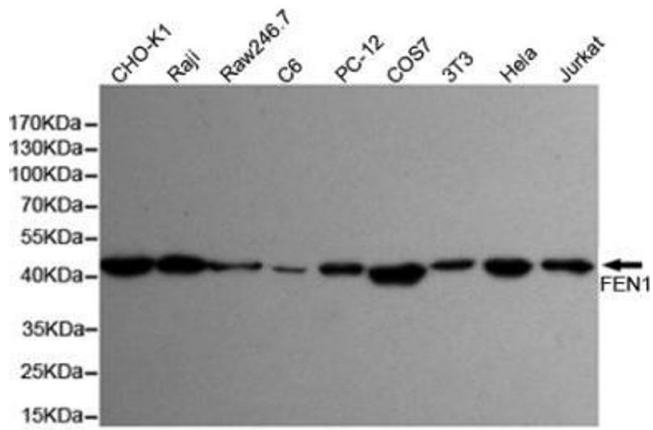
Storage: 4 °C, -20 °C

Images



Immunocytochemistry

Image 1. Immunocytochemistry staining of HeLa cells fixed with 4 % Paraformaldehyde and using FEN-1 mouse mAb (dilution 1:400).



Western Blotting

Image 2. Western blot detection of FEN-1 in HeLa, Jurkat, 3T3, COS7, PC-12, C6, Raw264.7, Raji and CHO-K1 cell lysates using FEN-1 mouse mAb (1:1000 diluted). Predicted band size: 45KDa. Observed band size: 45KDa.