

Datasheet for ABIN6241722

anti-CHRD1 antibody**2** Images[Go to Product page](#)

Overview

Quantity:	100 µL
Target:	CHRD1
Reactivity:	Human
Host:	Mouse
Clonality:	Monoclonal
Conjugate:	This CHRD1 antibody is un-conjugated
Application:	Western Blotting (WB), Immunocytochemistry (ICC)

Product Details

Immunogen:	Recombinant Protein
------------	---------------------

Target Details

Target:	CHRD1
Alternative Name:	CHRD1 (CHRD1 Products)
Background:	<p>Antagonizes the function of BMP4 by binding to it and preventing its interaction with receptors. Alters the fate commitment of neural stem cells from gliogenesis to neurogenesis. Contributes to neuronal differentiation of neural stem cells in the brain by preventing the adoption of a glial fate. May play a crucial role in dorsoventral axis formation. May play a role in embryonic bone formation (By similarity). May also play an important role in regulating retinal angiogenesis through modulation of BMP4 actions in endothelial cells. Plays a role during anterior segment eye development.</p>

Target Details

UniProt: [Q9BU40](#)

Application Details

Application Notes: WB: 1:1000. ICC: 1:300

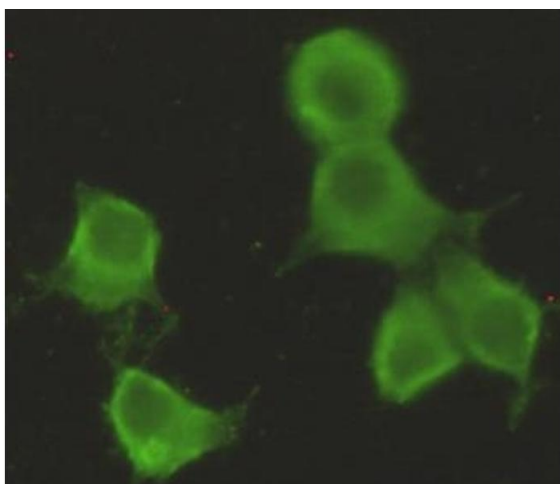
Restrictions: For Research Use only

Handling

Format: Liquid

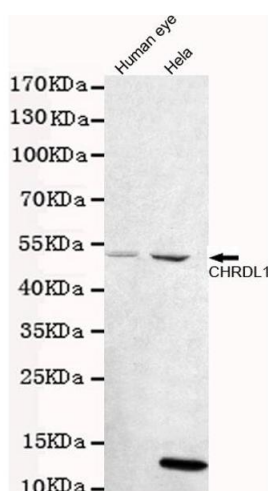
Storage: 4 °C, -20 °C

Images



Immunocytochemistry

Image 1. Immunocytochemistry stain of HeLa using CHRDL1 mouse mAb (1:300).



Western Blotting

Image 2. Western blot detection of CHRDL1 in human eye and HeLa cell lysates using CHRDL1 mouse mAb (1:1000 diluted). Predicted band size: 57 kDa. Observed band size: 52 kDa.