



[Go to Product page](#)

Datasheet for ABIN6241839  
**anti-SLC22A3 antibody**

1 Image

### Overview

Quantity:	100 µL
Target:	SLC22A3 (OCT3)
Reactivity:	Human, Mouse, Rat
Host:	Rabbit
Clonality:	Polyclonal
Conjugate:	This SLC22A3 antibody is un-conjugated
Application:	Western Blotting (WB)

### Product Details

Immunogen: Synthetic Peptide

### Target Details

Target:	SLC22A3 (OCT3)
Alternative Name:	SLC22A3 ( <a href="#">OCT3 Products</a> )
Background:	Mediates potential-dependent transport of a variety of organic cations. May play a significant role in the disposition of cationic neurotoxins and neurotransmitters in the brain.
UniProt:	<a href="#">075751</a>

### Application Details

Application Notes: WB: 1:1000

## Application Details

---

Restrictions: For Research Use only

## Handling

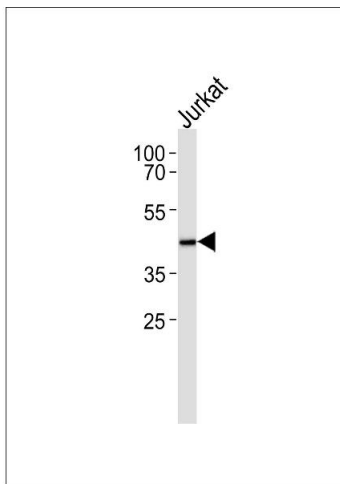
---

Format: Liquid

Storage: 4 °C,-20 °C

## Images

---



### Western Blotting

**Image 1.** Western blot analysis of lysate from HUVEC cell line, using SLC22A3 Antibody (ABIN6241839). ABIN6241839 was diluted at 1:1000. A goat anti-rabbit IgG H&L(HRP) at 1:5000 dilution was used as the secondary antibody. Lysate at 35 µg.