

Datasheet for ABIN6241898

anti-HES2 antibody[Go to Product page](#)**1** Image

Overview

Quantity:	100 µL
Target:	HES2
Reactivity:	Human, Mouse, Rat
Host:	Rabbit
Clonality:	Polyclonal
Conjugate:	This HES2 antibody is un-conjugated
Application:	Western Blotting (WB)

Product Details

Immunogen:	Synthetic Peptide
------------	-------------------

Target Details

Target:	HES2
Alternative Name:	HES2 (HES2 Products)
Background:	Transcriptional repressor of genes that require a bHLH protein for their transcription (By similarity).
UniProt:	Q9Y543

Application Details

Application Notes:	WB: 1:1000
--------------------	------------

Application Details

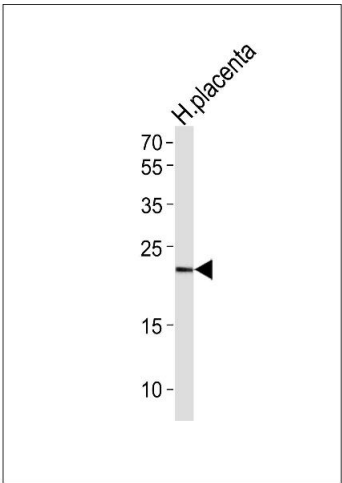
Restrictions: For Research Use only

Handling

Format: Liquid

Storage: 4 °C,-20 °C

Images



Western Blotting

Image 1. Western blot analysis of lysate from human placenta tissue lysate, using HES2 Antibody was diluted at 1:1000. A goat anti-rabbit IgG H&L(HRP) at 1:5000 dilution was used as the secondary antibody. Lysate at 35 µg.