



[Go to Product page](#)

Datasheet for ABIN6241903

## anti-KIF11 antibody

3 Images

### Overview

Quantity:	100 µL
Target:	KIF11
Reactivity:	Human
Host:	Mouse
Clonality:	Monoclonal
Conjugate:	This KIF11 antibody is un-conjugated
Application:	Western Blotting (WB), Immunoprecipitation (IP), Immunocytochemistry (ICC)

### Product Details

Immunogen: Recombinant Protein

### Target Details

Target:	KIF11
Alternative Name:	Eg5 ( <a href="#">KIF11 Products</a> )
Background:	Motor protein required for establishing a bipolar spindle. Blocking of KIF11 prevents centrosome migration and arrest cells in mitosis with monoastral microtubule arrays.
UniProt:	<a href="#">P52732</a>

### Application Details

Application Notes: IP: 1:500. WB: 1:1000. ICC: 1:200

## Application Details

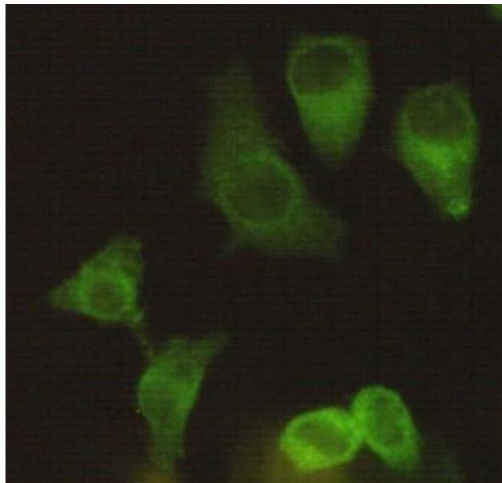
Restrictions: For Research Use only

## Handling

Format: Liquid

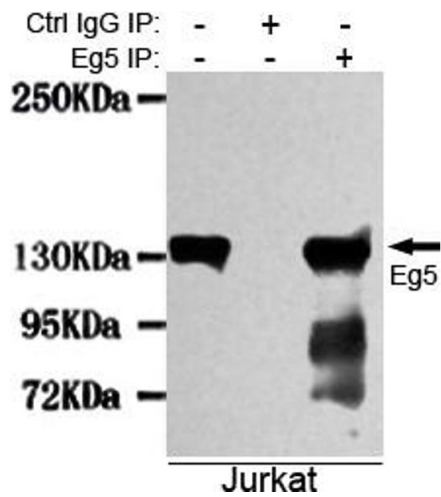
Storage: 4 °C, -20 °C

## Images



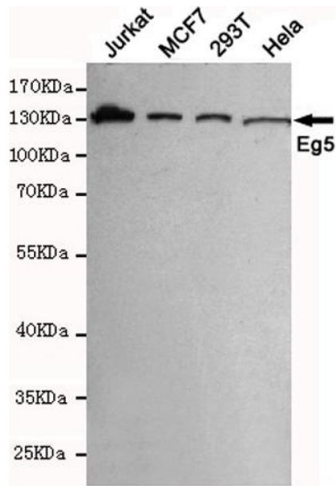
### Immunocytochemistry

**Image 1.** Immunocytochemistry staining of HeLa using Eg5 mouse mAb (1:200).



### Immunoprecipitation

**Image 2.** Immunoprecipitation analysis of Jurkat cell lysates using Eg5 mouse mAb.



### Western Blotting

**Image 3.** Western blot detection of Eg5 in MCF7,293T,Jurkat and HeLa cell lysates using Eg5 mouse mAb (1:1000 diluted).Predicted band size:130KDa.Observed band size:130KDa.