



[Go to Product page](#)

Datasheet for ABIN6241977

anti-PDHA1 antibody

2 Images

Overview

Quantity:	100 µL
Target:	PDHA1
Reactivity:	Human, Mouse
Host:	Mouse
Clonality:	Monoclonal
Conjugate:	This PDHA1 antibody is un-conjugated
Application:	Western Blotting (WB), Immunocytochemistry (ICC)

Product Details

Immunogen: Recombinant Protein

Target Details

Target:	PDHA1
Alternative Name:	pyruvate dehydrogenase (lipoamide) alpha 1 (PDHA1 Products)
Background:	The pyruvate dehydrogenase complex catalyzes the overall conversion of pyruvate to acetyl-CoA and CO(2), and thereby links the glycolytic pathway to the tricarboxylic cycle.
UniProt:	P08559
Pathways:	Warburg Effect

Application Details

Application Notes: WB: 1:1000. ICC: 1:100

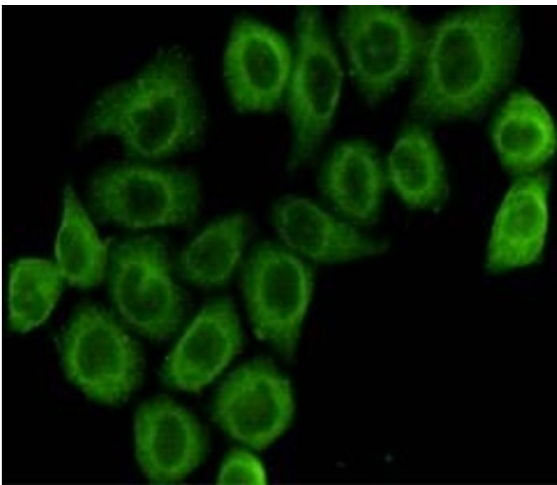
Restrictions: For Research Use only

Handling

Format: Liquid

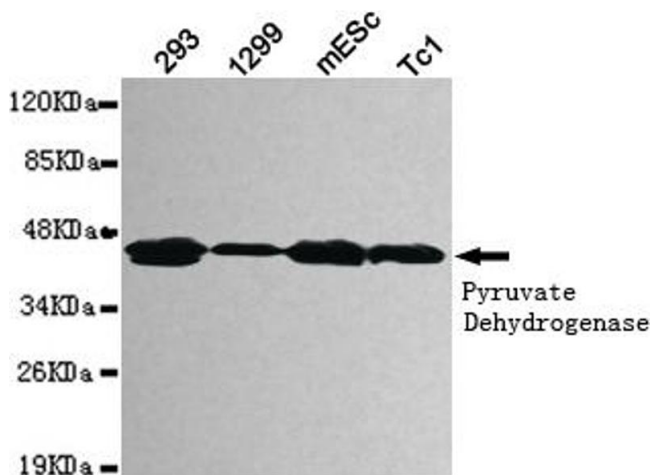
Storage: 4 °C,-20 °C

Images



Immunocytochemistry

Image 1. Immunocytochemistry staining of HeLa cells fixed with 4 % Paraformaldehyde and using anti-pyruvate dehydrogenase (lipoamide) alpha 1 mouse mAb(dilution 1:100).



Western Blotting

Image 2. Western blot detection of pyruvate dehydrogenase (lipoamide) alpha 1 in 293,1299,mEsc and Tc1 cell lysates using pyruvate dehydrogenase (lipoamide) alpha 1 mouse mAb (1:1000 diluted).Predicted band size: 43KDa.Observed band size: 43KDa.