



[Go to Product page](#)

Datasheet for ABIN6241980

anti-PP2A alpha/beta antibody

2 Images

Overview

Quantity:	100 µL
Target:	PP2A alpha/beta (PP2A A/B)
Reactivity:	Human, Mouse
Host:	Mouse
Clonality:	Monoclonal
Conjugate:	This PP2A alpha/beta antibody is un-conjugated
Application:	Western Blotting (WB), Immunoprecipitation (IP)

Product Details

Immunogen: Recombinant Protein

Target Details

Target:	PP2A alpha/beta (PP2A A/B)
Alternative Name:	PP2A alpha and beta (PP2A A/B Products)
Background:	PP2A can modulate the activity of phosphorylase B kinase casein kinase 2, mitogen-stimulated S6 kinase, and MAP-2 kinase.
UniProt:	P62714

Application Details

Application Notes: IP: 1:500. WB: 1:2000

Application Details

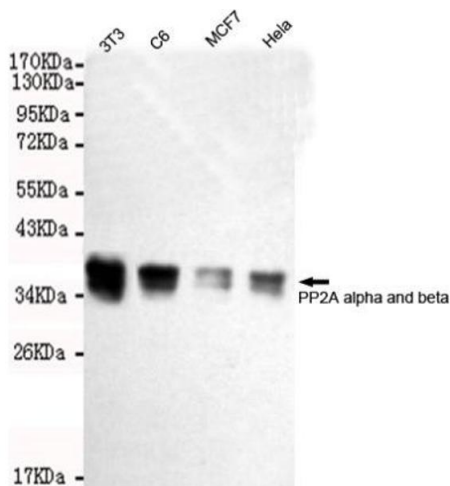
Restrictions: For Research Use only

Handling

Format: Liquid

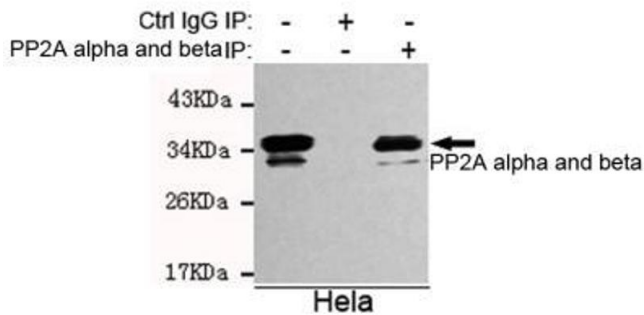
Storage: 4 °C, -20 °C

Images



Western Blotting

Image 1. Western blot detection of A alpha and beta in HeLa, MCF7, C6 and 3T3 cell lysates using A alpha and beta mouse mAb (1:2000 diluted). Predicted band size: 36KDa. Observed band size: 36KDa.



Immunoprecipitation

Image 2. Immunoprecipitation analysis of HeLa cell lysates using A alpha and beta mouse mAb.